

DATASHEET

EFHC1 Rabbit Polyclonal Antibody

CAT. NO. APA13209

KEY FEATURES

Target	EFHC1	Source / Host	Rabbit
Reactivity	Human, Mouse	Clonality	Polyclonal
Applications	WB	Conjugation	Unconjugated
Form / Buffer	Liquid in 0.42% Potassium phosphate, 0.87% Sodium chloride, pH 7.3, 30% glycerol, and 0.01% sodium azide.		Storage at-20°C

BACKGROUND

Microtubule inner protein (MIP) part of the dynein-decorated doublet microtubules (DMTs) in cilia axoneme, which is required for motile cilia beating part of the dynein-decorated doublet microtubules (DMTs) in cilia axoneme, which is required for motile cilia beating . Microtubule-associated protein which regulates cell division and neuronal migration during cortical development . Necessary for radial and tangential cell migration during brain development, possibly acting as a regulator of cell morphology and process formation during migration . May enhance calcium influx through CACNA1E and stimulate programmed cell death .

APPLICATION

To ensure optimal assay performance, AREX recommends conducting reagent titration tailored to each testing system for optimal detection results.

WB	1:500 - 1:1000
----	----------------

*Results are sample-specific. Please refer to your local assay conditions and test parameters for reference.

PRODUCT OVERVIEW

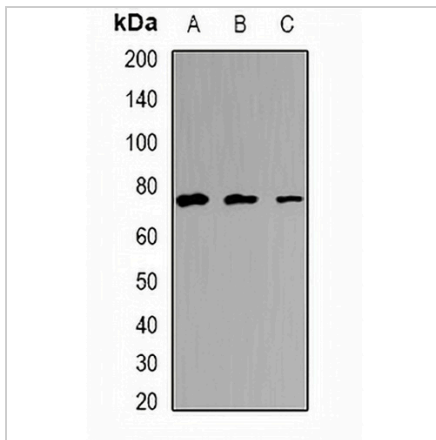
Description	Rabbit polyclonal antibody to EFHC1
Specificity	Recognizes endogenous levels of EFHC1 protein.
Antibody Type	Primary antibody
Immunogen	Recombinant fusion protein of human EFHC1
Purification	The antibody was purified by immunogen affinity chromatography.
Molecular Weight	Predicted: 31; Observed: 74 kD
Form/Buffer	Liquid in 0.42% Potassium phosphate, 0.87% Sodium chloride, pH 7.3, 30% glycerol, and 0.01% sodium azide.
Alternative Names	EF-hand domain-containing protein 1; Myoclonin-1
Gene Symbol	EFHC1
Entrez Gene	114327(Human)
SwissProt	Q5JVL4(Human)

*AREX continuously optimizes our products. Webpage content may not reflect the latest updates. For inquiries, please contact info@arexbio.com or your local distributor.

*Clone Number, Reactivity, Source/Host and Clonality can be found in the product name and Key Features section above.

DATASHEET**EFHC1 Rabbit Polyclonal Antibody**

CAT. NO. APA13209

DATA

Western blot analysis of EFHC1 expression in HeLa (A), mouse testis (B), mouse brain (C) whole cell lysates. (Predicted band size: 31; 72; 73 kD; Observed band size: 74 kD)

STORAGE

Store at 4°C short term. For long term storage, store at -20°C, avoiding freeze/thaw cycles.

NOTE

For Research Use Only. Not for diagnostic, therapeutics, prophylactic or in vivo use.