

DATASHEET

OSGEPL1 Rabbit Polyclonal Antibody

CAT. NO. APA13214

KEY FEATURES

Target	OSGEPL1	Source / Host	Rabbit
Reactivity	Human, Mouse, Rat	Clonality	Polyclonal
Applications	WB, IHC, IF/ICC	Conjugation	Unconjugated
Form / Buffer	Liquid in 0.42% Potassium phosphate, 0.87% Sodium chloride, pH 7.3, 30% glycerol, and 0.01% sodium azide.		Storage at-20°C

BACKGROUND

Required for the formation of a threonylcarbamoyl group on adenosine at position 37 (t(6)A37) in mitochondrial tRNAs that read codons beginning with adenine. Probably involved in the transfer of the threonylcarbamoyl moiety of threonylcarbamoyl-AMP (TC-AMP) to the N6 group of A37. Involved in mitochondrial genome maintenance.

APPLICATION

To ensure optimal assay performance, AREX recommends conducting reagent titration tailored to each testing system for optimal detection results.

WB	1:500 - 1:2000
IHC	1:50 - 1:200
IF/ICC	1:50 - 1:100

*Results are sample-specific. Please refer to your local assay conditions and test parameters for reference.

PRODUCT OVERVIEW

Description	Rabbit polyclonal antibody to OSGEPL1
Specificity	Recognizes endogenous levels of OSGEPL1 protein.
Antibody Type	Primary antibody
Immunogen	Recombinant fusion protein of human OSGEPL1
Purification	The antibody was purified by immunogen affinity chromatography.
Molecular Weight	Predicted: 32; Observed: 45 kD
Form/Buffer	Liquid in 0.42% Potassium phosphate, 0.87% Sodium chloride, pH 7.3, 30% glycerol, and 0.01% sodium azide.
Alternative Names	GCP1; Probable tRNA N6-adenosine threonylcarbamoyltransferase mitochondrial; N6-L-threonylcarbamoyladenine synthase; t(6)A synthase; O-sialoglycoprotein endopeptidase-like protein 1; t(6)A37 threonylcarbamoyladenine biosynthesis protein OSGEPL1; tRNA threonylcarbamoyladenine biosynthesis protein OSGEPL1
Gene Symbol	OSGEPL1
Entrez Gene	64172(Human); 72085(Mouse); 314548(Rat)
SwissProt	Q9H4B0(Human); Q6PEB4(Mouse); Q4V7F3(Rat)

*AREX continuously optimizes our products. Webpage content may not reflect the latest updates. For inquiries, please contact info@arexbio.com or your local distributor.

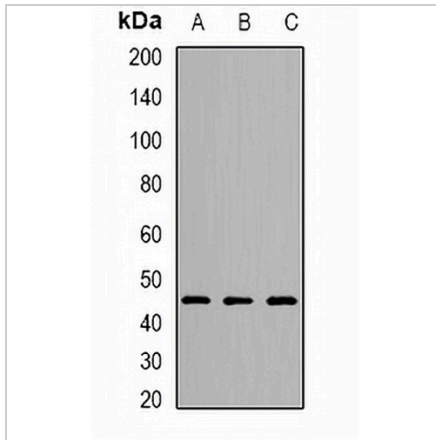
*Clone Number, Reactivity, Source/Host and Clonality can be found in the product name and Key Features section above.

DATASHEET

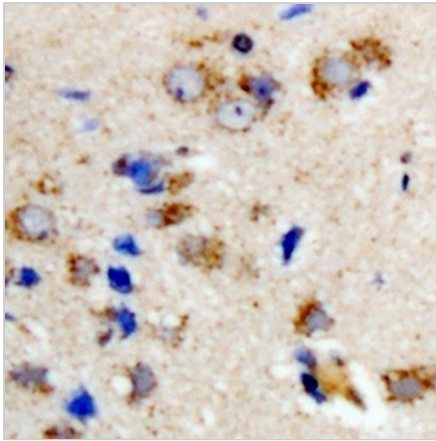
OSGEPL1 Rabbit Polyclonal Antibody

CAT. NO. APA13214

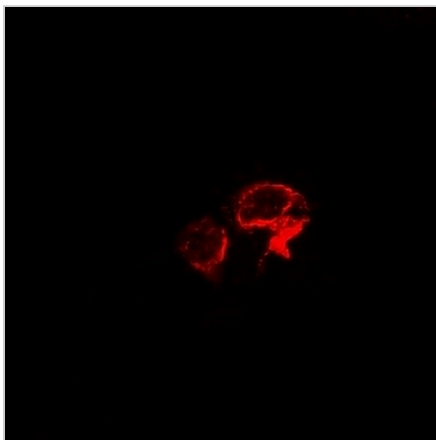
DATA



Western blot analysis of OSGEPL1 expression in mouse kidney (A), mouse liver (B), rat brain (C) whole cell lysates. (Predicted band size: 32; 39; 45 kD; Observed band size: 45 kD)



Immunohistochemical analysis of OSGEPL1 staining in rat brain formalin fixed paraffin embedded tissue section. The section was pre-treated using heat mediated antigen retrieval with sodium citrate buffer (pH 6.0). The section was then incubated with the antibody at room temperature and detected using an HRP conjugated compact polymer system. DAB was used as the chromogen. The section was then counterstained with haematoxylin and mounted with DPX.



Immunofluorescent analysis of OSGEPL1 staining in A549 cells. Formalin-fixed cells were permeabilized with 0.1% Triton X-100 in TBS for 5-10 minutes and blocked with 3% BSA-PBS for 30 minutes at room temperature. Cells were probed with the primary antibody in 3% BSA-PBS and incubated overnight at 4 °C in a hidified chamber. Cells were washed with PBST and incubated with a DyLight 594-conjugated secondary antibody (red) in PBS at room temperature in the dark.

STORAGE

Store at 4°C short term. For long term storage, store at -20°C, avoiding freeze/thaw cycles.

NOTE

For Research Use Only. Not for diagnostic, therapeutics, prophylactic or in vivo use.