

DATASHEET

HMGCL Rabbit Polyclonal Antibody

CAT. NO. APA13216

KEY FEATURES

Target	HMGCL	Source / Host	Rabbit
Reactivity	Human, Mouse, Rat	Clonality	Polyclonal
Applications	WB, IHC	Conjugation	Unconjugated
Form / Buffer	Liquid in 0.42% Potassium phosphate, 0.87% Sodium chloride, pH 7.3, 30% glycerol, and 0.01% sodium azide.		Storage at -20°C

BACKGROUND

Mitochondrial 3-hydroxy-3-methylglutaryl-CoA lyase that catalyzes a cation-dependent cleavage of (S)-3-hydroxy-3-methylglutaryl-CoA into acetyl-CoA and acetoacetate, a key step in ketogenesis. Terminal step in leucine catabolism. Ketone bodies (beta-hydroxybutyrate, acetoacetate and acetone) are essential as an alternative source of energy to glucose, as lipid precursors and as regulators of metabolism.

APPLICATION

To ensure optimal assay performance, AREX recommends conducting reagent titration tailored to each testing system for optimal detection results.

WB	1:500 - 1:2000
IHC	1:50 - 1:200

*Results are sample-specific. Please refer to your local assay conditions and test parameters for reference.

PRODUCT OVERVIEW

Description	Rabbit polyclonal antibody to HMGCL
Specificity	Recognizes endogenous levels of HMGCL protein.
Antibody Type	Primary antibody
Immunogen	Recombinant fusion protein of human HMGCL
Purification	The antibody was purified by immunogen affinity chromatography.
Molecular Weight	Predicted: 20; Observed: 30 kD
Form/Buffer	Liquid in 0.42% Potassium phosphate, 0.87% Sodium chloride, pH 7.3, 30% glycerol, and 0.01% sodium azide.
Alternative Names	Hydroxymethylglutaryl-CoA lyase mitochondrial; HL; HMG-CoA lyase; 3-hydroxy-3-methylglutarate-CoA lyase
Gene Symbol	HMGCL
Entrez Gene	3155(Human); 79238(Rat)
SwissProt	P35914(Human); P97519(Rat)

*AREX continuously optimizes our products. Webpage content may not reflect the latest updates. For inquiries, please contact info@arex.bio or your local distributor.

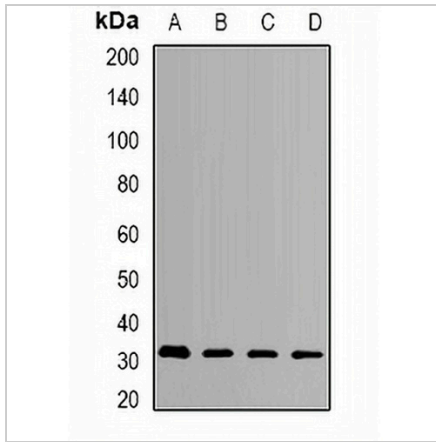
*Clone Number, Reactivity, Source/Host and Clonality can be found in the product name and Key Features section above.

DATASHEET

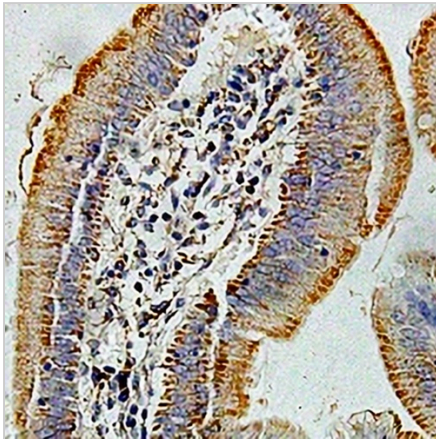
HMGCL Rabbit Polyclonal Antibody

CAT. NO. APA13216

DATA



Western blot analysis of HMGCL expression in SKOV3 (A), MCF7 (B), mouse liver (C), mouse kidney (D) whole cell lysates. (Predicted band size: 20; 26; 34 kD; Observed band size: 30 kD)



Immunohistochemical analysis of HMGCL staining in human colon cancer formalin fixed paraffin embedded tissue section. The section was pre-treated using heat mediated antigen retrieval with sodium citrate buffer (pH 6.0). The section was then incubated with the antibody at room temperature and detected using an HRP conjugated compact polymer system. DAB was used as the chromogen. The section was then counterstained with haematoxylin and mounted with DPX.

STORAGE

Store at 4°C short term. For long term storage, store at -20°C, avoiding freeze/thaw cycles.

NOTE

For Research Use Only. Not for diagnostic, therapeutics, prophylactic or in vivo use.