

**DATASHEET**

**MBNL1 Rabbit Polyclonal Antibody**

CAT. NO. APA13217

**KEY FEATURES**

Target	MBNL1	Source / Host	Rabbit
Reactivity	Human, Mouse	Clonality	Polyclonal
Applications	WB, IHC, IF/ICC	Conjugation	Unconjugated
Form / Buffer	Liquid in 0.42% Potassium phosphate, 0.87% Sodium chloride, pH 7.3, 30% glycerol, and 0.01% sodium azide.		Storage at -20°C

**BACKGROUND**

Mediates pre-mRNA alternative splicing regulation. Acts either as activator or repressor of splicing on specific pre-mRNA targets. Inhibits cardiac troponin-T (TNNT2) pre-mRNA exon inclusion but induces insulin receptor (IR) pre-mRNA exon inclusion in muscle. Antagonizes the alternative splicing activity pattern of CELF proteins. Regulates the TNNT2 exon 5 skipping through competition with U2AF2. Inhibits the formation of the spliceosome A complex on intron 4 of TNNT2 pre-mRNA. Binds to the stem-loop structure within the polypyrimidine tract of TNNT2 intron 4 during spliceosome assembly. Binds to the 5'-YGCU(U/G)Y-3'consensus sequence. Binds to the IR RNA. Binds to expanded CUG repeat RNA, which folds into a hairpin structure containing GC base pairs and bulged, unpaired U residues.

**APPLICATION**

To ensure optimal assay performance, AREX recommends conducting reagent titration tailored to each testing system for optimal detection results.

WB	1:500 - 1:2000
IHC	1:50 - 1:200
IF/ICC	1:50 - 1:200

\*Results are sample-specific. Please refer to your local assay conditions and test parameters for reference.

**PRODUCT OVERVIEW**

Description	Rabbit polyclonal antibody to MBNL1
Specificity	Recognizes endogenous levels of MBNL1 protein.
Antibody Type	Primary antibody
Immunogen	Recombinant fusion protein of human MBNL1
Purification	The antibody was purified by immunogen affinity chromatography.
Molecular Weight	Predicted: 33; Observed: 42 kD
Form/Buffer	Liquid in 0.42% Potassium phosphate, 0.87% Sodium chloride, pH 7.3, 30% glycerol, and 0.01% sodium azide.
Alternative Names	EXP; KIAA0428; MBNL; Muscleblind-like protein 1; Triplet-expansion RNA-binding protein
Gene Symbol	MBNL1
Entrez Gene	4154(Human); 56758(Mouse)
SwissProt	Q9NR56(Human); Q9JKP5(Mouse)

\*AREX continuously optimizes our products. Webpage content may not reflect the latest updates. For inquiries, please contact [info@arexbio.com](mailto:info@arexbio.com) or your local distributor.

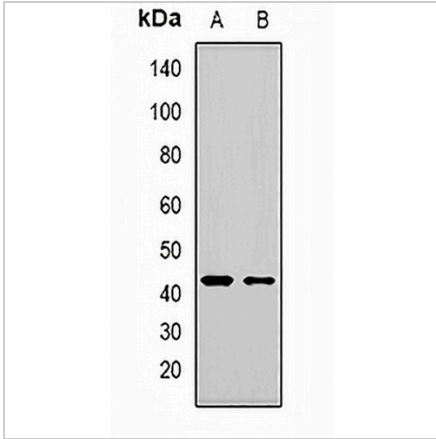
\*Clone Number, Reactivity, Source/Host and Clonality can be found in the product name and Key Features section above.

**DATASHEET**

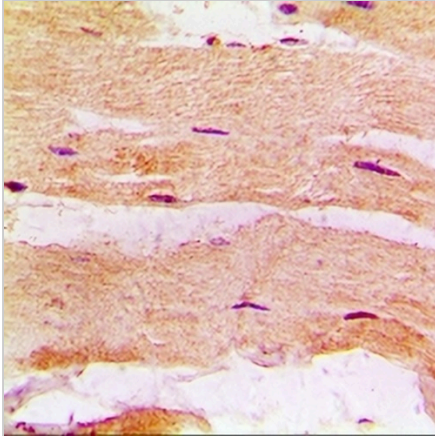
**MBNL1 Rabbit Polyclonal Antibody**

CAT. NO. APA13217

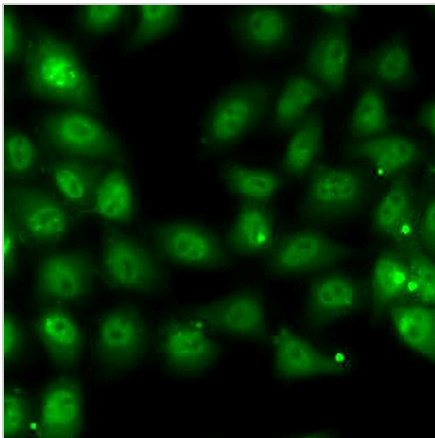
**DATA**



Western blot analysis of MBNL1 expression in HepG2 (A), MCF7 (B) whole cell lysates. (Predicted band size: 33; 34; 36; 37; 39; 40; 41 kD; Observed band size: 42 kD)



Immunohistochemical analysis of MBNL1 staining in rat heart formalin fixed paraffin embedded tissue section. The section was pre-treated using heat mediated antigen retrieval with sodium citrate buffer (pH 6.0). The section was then incubated with the antibody at room temperature and detected using an HRP conjugated compact polymer system. DAB was used as the chromogen. The section was then counterstained with haematoxylin and mounted with DPX.



Immunofluorescent analysis of MBNL1 staining in MCF7 cells. Formalin-fixed cells were permeabilized with 0.1% Triton X-100 in TBS for 5-10 minutes and blocked with 3% BSA-PBS for 30 minutes at room temperature. Cells were probed with the primary antibody in 3% BSA-PBS and incubated overnight at 4 °C in a humidified chamber. Cells were washed with PBST and incubated with a AREX® Fluor 488 -conjugated secondary antibody (green) in PBS at room temperature in the dark. DAPI was used to stain the cell nuclei (blue).

**STORAGE**

Store at 4°C short term. For long term storage, store at -20°C, avoiding freeze/thaw cycles.

**NOTE**

For Research Use Only. Not for diagnostic, therapeutics, prophylactic or in vivo use.