

## DATASHEET

# MTCH1 Rabbit Polyclonal Antibody

CAT. NO. APA13218

### KEY FEATURES

Target	MTCH1	Source / Host	Rabbit
Reactivity	Human, Mouse, Rat	Clonality	Polyclonal
Applications	WB, IHC	Conjugation	Unconjugated
Form / Buffer	Liquid in 0.42% Potassium phosphate, 0.87% Sodium chloride, pH 7.3, 30% glycerol, and 0.01% sodium azide.		Storage at -20°C

### BACKGROUND

Protein insertase that mediates insertion of transmembrane proteins into the mitochondrial outer membrane . Catalyzes insertion of proteins with alpha-helical transmembrane regions, such as signal-anchored, tail-anchored and multi-pass membrane proteins . Does not mediate insertion of beta-barrel transmembrane proteins . May play a role in apoptosis .

### APPLICATION

To ensure optimal assay performance, AREX recommends conducting reagent titration tailored to each testing system for optimal detection results.

WB	1:500 - 1:2000
IHC	1:50 - 1:200

\*Results are sample-specific. Please refer to your local assay conditions and test parameters for reference.

### PRODUCT OVERVIEW

Description	Rabbit polyclonal antibody to MTCH1
Specificity	Recognizes endogenous levels of MTCH1 protein.
Antibody Type	Primary antibody
Immunogen	Recombinant fusion protein of human MTCH1
Purification	The antibody was purified by immunogen affinity chromatography.
Molecular Weight	Predicted: 19; Observed: 45-50 kD
Form/Buffer	Liquid in 0.42% Potassium phosphate, 0.87% Sodium chloride, pH 7.3, 30% glycerol, and 0.01% sodium azide.
Alternative Names	PSAP; Mitochondrial carrier homolog 1; Presenilin-associated protein
Gene Symbol	MTCH1
Entrez Gene	23787(Human); 56462(Mouse)
SwissProt	Q9NZJ7(Human); Q791T5(Mouse)

\*AREX continuously optimizes our products. Webpage content may not reflect the latest updates. For inquiries, please contact [info@arexbio.com](mailto:info@arexbio.com) or your local distributor.

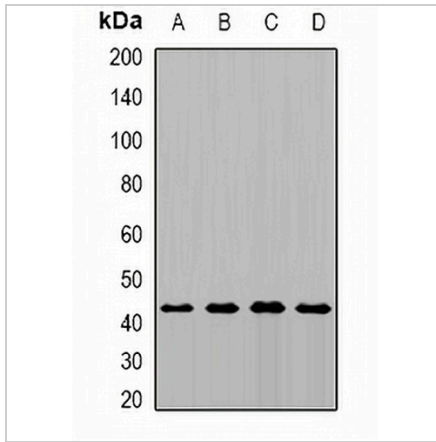
\*Clone Number, Reactivity, Source/Host and Clonality can be found in the product name and Key Features section above.

**DATASHEET**

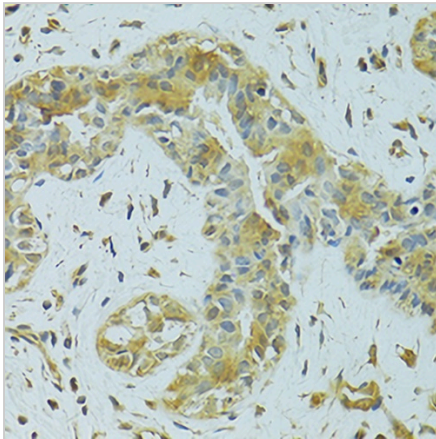
**MTCH1 Rabbit Polyclonal Antibody**

CAT. NO. APA13218

**DATA**



Western blot analysis of MTCH1 expression in MCF7 (A), HepG2 (B), mouse kidney (C), rat brain (D) whole cell lysates. (Predicted band size: 19; 39; 41 kD; Observed band size: 45-50 kD)



Immunohistochemical analysis of MTCH1 staining in human breast cancer formalin fixed paraffin embedded tissue section. The section was pre-treated using heat mediated antigen retrieval with sodium citrate buffer (pH 6.0). The section was then incubated with the antibody at room temperature and detected using an HRP conjugated compact polymer system. DAB was used as the chromogen. The section was then counterstained with haematoxylin and mounted with DPX.

**STORAGE**

Store at 4°C short term. For long term storage, store at -20°C, avoiding freeze/thaw cycles.

**NOTE**

For Research Use Only. Not for diagnostic, therapeutics, prophylactic or in vivo use.