

**DATASHEET**

**PHF19 Rabbit Polyclonal Antibody**

CAT. NO. APA13219

**KEY FEATURES**

Target	PHF19	Source / Host	Rabbit
Reactivity	Human, Mouse, Rat	Clonality	Polyclonal
Applications	WB, IF/ICC	Conjugation	Unconjugated
Form / Buffer	Liquid in 0.42% Potassium phosphate, 0.87% Sodium chloride, pH 7.3, 30% glycerol, and 0.01% sodium azide.		Storage at -20°C

**BACKGROUND**

Polycomb group (PcG) protein that specifically binds histone H3 trimethylated at 'Lys-36' (H3K36me3) and recruits the PRC2 complex, thus enhancing PRC2 H3K27me3 methylation activity protein that specifically binds histone H3 trimethylated at 'Lys-36' (H3K36me3) and recruits the PRC2 complex, thus enhancing PRC2 H3K27me3 methylation activity . Probably involved in the transition from an active state to a repressed state in embryonic stem cells: acts by binding to H3K36me3, a mark for transcriptional activation, and recruiting H3K36me3 histone demethylases RIOX1 or KDM2B, leading to demethylation of H3K36 and recruitment of the PRC2 complex that mediates H3K27me3 methylation, followed by de novo silencing .

**APPLICATION**

To ensure optimal assay performance, AREX recommends conducting reagent titration tailored to each testing system for optimal detection results.

WB	1:500 - 1:1000
IF/ICC	1:50 - 1:200

\*Results are sample-specific. Please refer to your local assay conditions and test parameters for reference.

**PRODUCT OVERVIEW**

Description	Rabbit polyclonal antibody to PHF19
Specificity	Recognizes endogenous levels of PHF19 protein.
Antibody Type	Primary antibody
Immunogen	Recombinant fusion protein of human PHF19
Purification	The antibody was purified by immunogen affinity chromatography.
Molecular Weight	Predicted: 14; Observed: 66 kD
Form/Buffer	Liquid in 0.42% Potassium phosphate, 0.87% Sodium chloride, pH 7.3, 30% glycerol, and 0.01% sodium azide.
Alternative Names	PCL3; PHD finger protein 19; Polycomb-like protein 3; hPCL3
Gene Symbol	PHF19
Entrez Gene	26147(Human); 74016(Mouse)
SwissProt	Q5T6S3(Human); Q9CXG9(Mouse)

\*AREX continuously optimizes our products. Webpage content may not reflect the latest updates. For inquiries, please contact [info@arexbio.com](mailto:info@arexbio.com) or your local distributor.

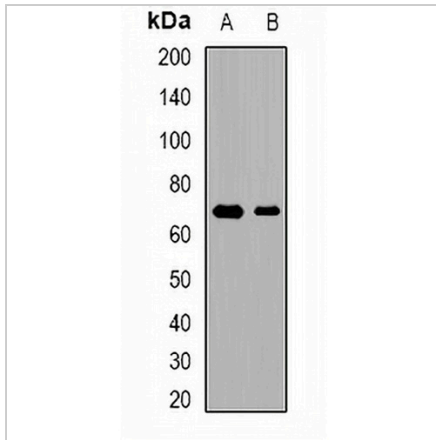
\*Clone Number, Reactivity, Source/Host and Clonality can be found in the product name and Key Features section above.

**DATASHEET**

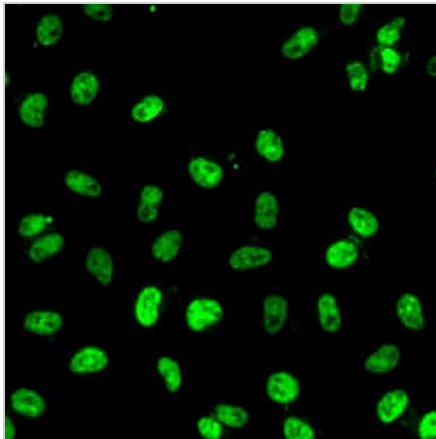
**PHF19 Rabbit Polyclonal Antibody**

CAT. NO. APA13219

**DATA**



Western blot analysis of PHF19 expression in mouse brain (A), rat brain (B) whole cell lysates. (Predicted band size: 14; 22; 65 kD; Observed band size: 66 kD)



Immunofluorescent analysis of PHF19 staining in A549 cells. Formalin-fixed cells were permeabilized with 0.1% Triton X-100 in TBS for 5-10 minutes and blocked with 3% BSA-PBS for 30 minutes at room temperature. Cells were probed with the primary antibody in 3% BSA-PBS and incubated overnight at 4 °C in a humidified chamber. Cells were washed with PBST and incubated with a AREX® Fluor 488 -conjugated secondary antibody (green) in PBS at room temperature in the dark. DAPI was used to stain the cell nuclei (blue).

**STORAGE**

Store at 4°C short term. For long term storage, store at -20°C, avoiding freeze/thaw cycles.

**NOTE**

For Research Use Only. Not for diagnostic, therapeutics, prophylactic or in vivo use.