

DATASHEET

Rpp20 Rabbit Polyclonal Antibody

CAT. NO. APA13237

KEY FEATURES

Target	Rpp20	Source / Host	Rabbit
Reactivity	Human, Mouse	Clonality	Polyclonal
Applications	WB	Conjugation	Unconjugated
Form / Buffer	Liquid in 0.42% Potassium phosphate, 0.87% Sodium chloride, pH 7.3, 30% glycerol, and 0.01% sodium azide.		Storage at -20°C

BACKGROUND

Component of ribonuclease P, a ribonucleoprotein complex that generates mature tRNA molecules by cleaving their 5'-ends . Also a component of the MRP ribonuclease complex, which cleaves pre-rRNA sequences .

APPLICATION

To ensure optimal assay performance, AREX recommends conducting reagent titration tailored to each testing system for optimal detection results.

WB	1:500 - 1:1000
----	----------------

*Results are sample-specific. Please refer to your local assay conditions and test parameters for reference.

PRODUCT OVERVIEW

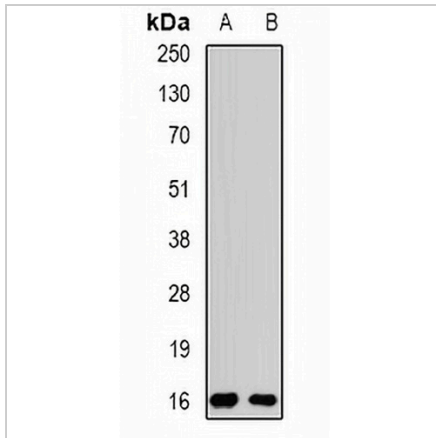
Description	Rabbit polyclonal antibody to Rpp20
Specificity	Recognizes endogenous levels of Rpp20 protein.
Antibody Type	Primary antibody
Immunogen	Recombinant fusion protein of human Rpp20
Purification	The antibody was purified by immunogen affinity chromatography.
Molecular Weight	Predicted: 15 kD; Observed: 15 kD
Form/Buffer	Liquid in 0.42% Potassium phosphate, 0.87% Sodium chloride, pH 7.3, 30% glycerol, and 0.01% sodium azide.
Alternative Names	RPP20; Ribonuclease P protein subunit p20; RNaseP protein p20; Ribonucleases P/MRP protein subunit POP7 homolog; hPOP7
Gene Symbol	POP7
Entrez Gene	10248(Human); 74097(Mouse)
SwissProt	O75817(Human); Q9DCH2(Mouse)

*AREX continuously optimizes our products. Webpage content may not reflect the latest updates. For inquiries, please contact info@arexbio.com or your local distributor.

*Clone Number, Reactivity, Source/Host and Clonality can be found in the product name and Key Features section above.

DATASHEET**Rpp20 Rabbit Polyclonal Antibody**

CAT. NO. APA13237

DATA

Western blot analysis of Rpp20 expression in MCF7 (A), SW480 (B) whole cell lysates. (Predicted band size: 15 kD; Observed band size: 15 kD)

STORAGE

Store at 4°C short term. For long term storage, store at -20°C, avoiding freeze/thaw cycles.

NOTE

For Research Use Only. Not for diagnostic, therapeutics, prophylactic or in vivo use.