

**DATASHEET**

**RNF31 Rabbit Polyclonal Antibody**

CAT. NO. APA13242

**KEY FEATURES**

Target	RNF31	Source / Host	Rabbit
Reactivity	Human, Mouse	Clonality	Polyclonal
Applications	WB, IF/ICC	Conjugation	Unconjugated
Form / Buffer	Liquid in 0.42% Potassium phosphate, 0.87% Sodium chloride, pH 7.3, 30% glycerol, and 0.01% sodium azide.		Storage at-20°C

**BACKGROUND**

E3 ubiquitin-protein ligase component of the LUBAC complex which conjugates linear ('Met-1'-linked) polyubiquitin chains to substrates and plays a key role in NF-kappa-B activation and regulation of inflammation polyubiquitin chains to substrates and plays a key role in NF-kappa-B activation and regulation of inflammation . LUBAC conjugates linear polyubiquitin to IKBKG and RIPK1 and is involved in activation of the canonical NF-kappa-B and the JNK signaling pathways . Linear ubiquitination mediated by the LUBAC complex interferes with TNF-induced cell death and thereby prevents inflammation .

**APPLICATION**

To ensure optimal assay performance, AREX recommends conducting reagent titration tailored to each testing system for optimal detection results.

WB	1:500 - 1:2000
IF/ICC	1:50 - 1:200

\*Results are sample-specific. Please refer to your local assay conditions and test parameters for reference.

**PRODUCT OVERVIEW**

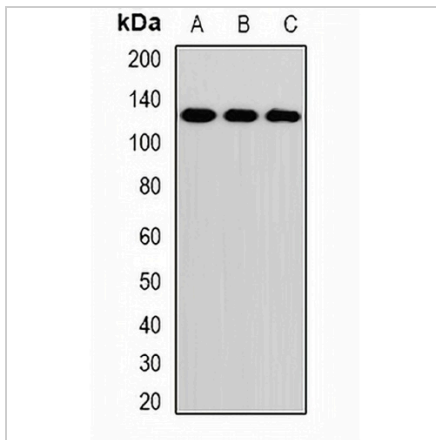
Description	Rabbit polyclonal antibody to RNF31
Specificity	Recognizes endogenous levels of RNF31 protein.
Antibody Type	Primary antibody
Immunogen	Recombinant fusion protein of human RNF31
Purification	The antibody was purified by immunogen affinity chromatography.
Molecular Weight	Predicted: 57; Observed: 125 kD
Form/Buffer	Liquid in 0.42% Potassium phosphate, 0.87% Sodium chloride, pH 7.3, 30% glycerol, and 0.01% sodium azide.
Alternative Names	ZIBRA; E3 ubiquitin-protein ligase RNF31; HOIL-1-interacting protein; HOIP; RING finger protein 31; Zinc in-between-RING-finger ubiquitin-associated domain protein
Gene Symbol	RNF31
Entrez Gene	55072(Human)
SwissProt	Q96EP0(Human)

\*AREX continuously optimizes our products. Webpage content may not reflect the latest updates. For inquiries, please contact [info@arexbio.com](mailto:info@arexbio.com) or your local distributor.

\*Clone Number, Reactivity, Source/Host and Clonality can be found in the product name and Key Features section above.

**DATASHEET****RNF31 Rabbit Polyclonal Antibody**

CAT. NO. APA13242

**DATA**

Western blot analysis of RNF31 expression in MCF7 (A), HeLa (B), PC3 (C) whole cell lysates. (Predicted band size: 57; 102; 119 kD; Observed band size: 125 kD)

**STORAGE**

Store at 4°C short term. For long term storage, store at -20°C, avoiding freeze/thaw cycles.

**NOTE**

For Research Use Only. Not for diagnostic, therapeutics, prophylactic or in vivo use.