

**DATASHEET**

**ATAD3A Rabbit Polyclonal Antibody**

CAT. NO. APA13243

**KEY FEATURES**

Target	ATAD3A	Source / Host	Rabbit
Reactivity	Human, Mouse, Rat	Clonality	Polyclonal
Applications	WB, IHC	Conjugation	Unconjugated
Form / Buffer	Liquid in 0.42% Potassium phosphate, 0.87% Sodium chloride, pH 7.3, 30% glycerol, and 0.01% sodium azide.		Storage at -20°C

**BACKGROUND**

Essential for mitochondrial network organization, mitochondrial metabolism and cell growth at organism and cellular level . May play an important role in mitochondrial protein synthesis . May also participate in mitochondrial DNA replication . May bind to mitochondrial DNA D-loops and contribute to nucleoid stability . Required for enhanced channeling of cholesterol for hormone-dependent steroidogenesis . Involved in mitochondrial-mediated antiviral innate immunity . Required to protect mitochondria from the PERK-mediated unfolded protein response: specifically inhibits the activity of EIF2AK3/PERK at mitochondria-endoplasmic reticulum contact sites, thereby providing a safe haven for mitochondrial protein translation during endoplasmic reticulum stress .

**APPLICATION**

To ensure optimal assay performance, AREX recommends conducting reagent titration tailored to each testing system for optimal detection results.

WB	1:500 - 1:2000
IHC	1:50 - 1:200

\*Results are sample-specific. Please refer to your local assay conditions and test parameters for reference.

**PRODUCT OVERVIEW**

Description	Rabbit polyclonal antibody to ATAD3A
Specificity	Recognizes endogenous levels of ATAD3A protein.
Antibody Type	Primary antibody
Immunogen	Recombinant fusion protein of human ATAD3A
Purification	The antibody was purified by immunogen affinity chromatography.
Molecular Weight	Predicted: 57; Observed: 70 kD
Form/Buffer	Liquid in 0.42% Potassium phosphate, 0.87% Sodium chloride, pH 7.3, 30% glycerol, and 0.01% sodium azide.
Alternative Names	ATPase family AAA domain-containing protein 3A
Gene Symbol	ATAD3A
Entrez Gene	55210(Human)
SwissProt	Q9NVI7(Human)

\*AREX continuously optimizes our products. Webpage content may not reflect the latest updates. For inquiries, please contact [info@arexbio.com](mailto:info@arexbio.com) or your local distributor.

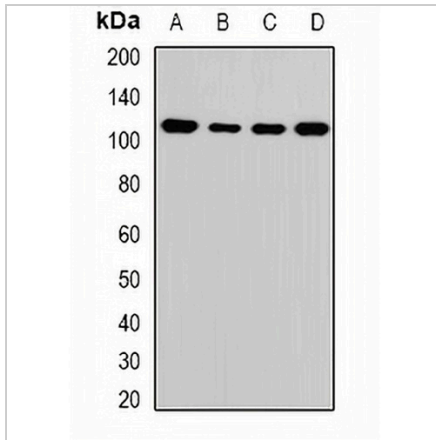
\*Clone Number, Reactivity, Source/Host and Clonality can be found in the product name and Key Features section above.

**DATASHEET**

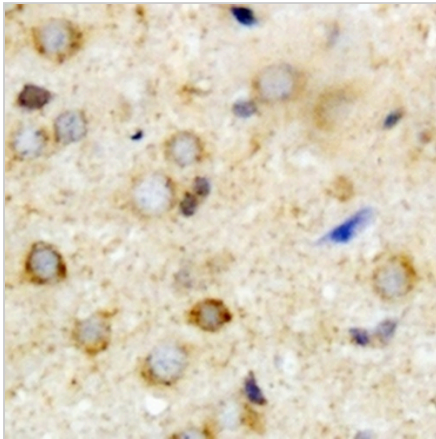
**ATAD3A Rabbit Polyclonal Antibody**

CAT. NO. APA13243

**DATA**



Western blot analysis of ATAD3A expression in MCF7 (A), HepG2 (B), mouse liver (C), mouse brain (D) whole cell lysates. (Predicted band size: 57; 66; 71 kD; Observed band size: 70 kD)



Immunohistochemical analysis of ATAD3A staining in mouse brain formalin fixed paraffin embedded tissue section. The section was pre-treated using heat mediated antigen retrieval with sodium citrate buffer (pH 6.0). The section was then incubated with the antibody at room temperature and detected using an HRP conjugated compact polymer system. DAB was used as the chromogen. The section was then counterstained with haematoxylin and mounted with DPX.

**STORAGE**

Store at 4°C short term. For long term storage, store at -20°C, avoiding freeze/thaw cycles.

**NOTE**

For Research Use Only. Not for diagnostic, therapeutics, prophylactic or in vivo use.