

**DATASHEET**

**KANSL3 Rabbit Polyclonal Antibody**

CAT. NO. APA13244

**KEY FEATURES**

Target	KANSL3	Source / Host	Rabbit
Reactivity	Human	Clonality	Polyclonal
Applications	WB	Conjugation	Unconjugated
Form / Buffer	Liquid in 0.42% Potassium phosphate, 0.87% Sodium chloride, pH 7.3, 30% glycerol, and 0.01% sodium azide.		Storage at-20°C

**BACKGROUND**

Non-catalytic component of the NSL histone acetyltransferase complex, a multiprotein complex that mediates histone H4 acetylation at 'Lys-5'- and 'Lys-8' (H4K5ac and H4K8ac) at transcription start sites and promotes transcription initiation at transcription start sites and promotes transcription initiation . The NSL complex also acts as a regulator of gene expression in mitochondria . Within the NSL complex, KANSL3 is required to promote KAT8 association with mitochondrial DNA . Required for transcription of intraciliary transport genes in both ciliated and non-ciliated cells . This is necessary for cilium assembly in ciliated cells and for organization of the microtubule cytoskeleton in non-ciliated cells .

**APPLICATION**

To ensure optimal assay performance, AREX recommends conducting reagent titration tailored to each testing system for optimal detection results.

WB	1:500 - 1:2000
----	----------------

\*Results are sample-specific. Please refer to your local assay conditions and test parameters for reference.

**PRODUCT OVERVIEW**

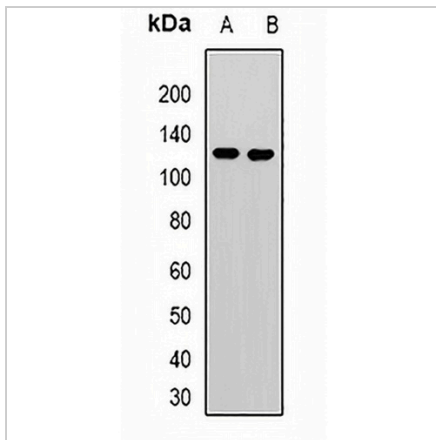
Description	Rabbit polyclonal antibody to KANSL3
Specificity	Recognizes endogenous levels of KANSL3 protein.
Antibody Type	Primary antibody
Immunogen	Recombinant fusion protein of human KANSL3
Purification	The antibody was purified by immunogen affinity chromatography.
Molecular Weight	Predicted: 16; Observed: 120 kD
Form/Buffer	Liquid in 0.42% Potassium phosphate, 0.87% Sodium chloride, pH 7.3, 30% glycerol, and 0.01% sodium azide.
Alternative Names	KIAA1310; NSL3; PRTD; SI1; KAT8 regulatory NSL complex subunit 3; NSL complex protein NSL3; Non-specific lethal 3 homolog; Serum inhibited-related protein; Testis development protein PRTD
Gene Symbol	KANSL3
Entrez Gene	55683(Human)
SwissProt	Q9P2N6(Human)

\*AREX continuously optimizes our products. Webpage content may not reflect the latest updates. For inquiries, please contact [info@arexbio.com](mailto:info@arexbio.com) or your local distributor.

\*Clone Number, Reactivity, Source/Host and Clonality can be found in the product name and Key Features section above.

**DATASHEET****KANSL3 Rabbit Polyclonal Antibody**

CAT. NO. APA13244

**DATA**

Western blot analysis of KANSL3 expression in Jurkat (A), U251 (B) whole cell lysates. (Predicted band size: 16; 58; 80; 83; 93; 95 kD; Observed band size: 120 kD)

**STORAGE**

Store at 4°C short term. For long term storage, store at -20°C, avoiding freeze/thaw cycles.

**NOTE**

For Research Use Only. Not for diagnostic, therapeutics, prophylactic or in vivo use.