

DATASHEET

KCTD15 Rabbit Polyclonal Antibody

CAT. NO. APA13250

KEY FEATURES

Target	KCTD15	Source / Host	Rabbit
Reactivity	Human, Mouse	Clonality	Polyclonal
Applications	WB	Conjugation	Unconjugated
Form / Buffer	Liquid in 0.42% Potassium phosphate, 0.87% Sodium chloride, pH 7.3, 30% glycerol, and 0.01% sodium azide.		Storage at-20°C

BACKGROUND

During embryonic development, it is involved in neural crest formation . Inhibits AP2 transcriptional activity by interaction with its activation domain .

APPLICATION

To ensure optimal assay performance, AREX recommends conducting reagent titration tailored to each testing system for optimal detection results.

WB	1:500 - 1:1000
----	----------------

*Results are sample-specific. Please refer to your local assay conditions and test parameters for reference.

PRODUCT OVERVIEW

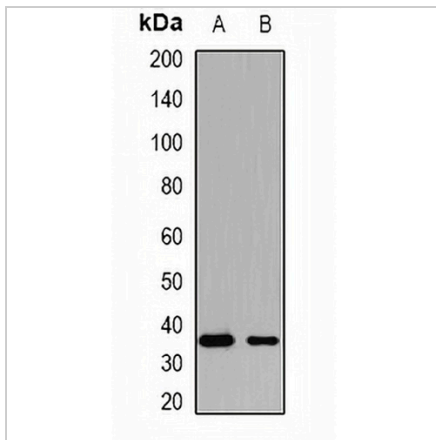
Description	Rabbit polyclonal antibody to KCTD15
Specificity	Recognizes endogenous levels of KCTD15 protein.
Antibody Type	Primary antibody
Immunogen	Recombinant fusion protein of human KCTD15
Purification	The antibody was purified by immunogen affinity chromatography.
Molecular Weight	Predicted: 26; Observed: 32 kD
Form/Buffer	Liquid in 0.42% Potassium phosphate, 0.87% Sodium chloride, pH 7.3, 30% glycerol, and 0.01% sodium azide.
Alternative Names	BTB/POZ domain-containing protein KCTD15; Potassium channel tetramerization domain-containing protein 15
Gene Symbol	KCTD15
Entrez Gene	79047(Human); 233107(Mouse)
SwissProt	Q96SI1(Human); Q8K0E1(Mouse)

*AREX continuously optimizes our products. Webpage content may not reflect the latest updates. For inquiries, please contact info@arexbio.com or your local distributor.

*Clone Number, Reactivity, Source/Host and Clonality can be found in the product name and Key Features section above.

DATASHEET**KCTD15 Rabbit Polyclonal Antibody**

CAT. NO. APA13250

DATA

Western blot analysis of KCTD15 expression in HEK293T (A), mouse skeletal muscles (B) whole cell lysates. (Predicted band size: 26; 31 kD; Observed band size: 32 kD)

STORAGE

Store at 4°C short term. For long term storage, store at -20°C, avoiding freeze/thaw cycles.

NOTE

For Research Use Only. Not for diagnostic, therapeutics, prophylactic or in vivo use.