

DATASHEET

JHDM1D Rabbit Polyclonal Antibody

CAT. NO. APA13251

KEY FEATURES

Target	JHDM1D	Source / Host	Rabbit
Reactivity	Human, Mouse, Rat	Clonality	Polyclonal
Applications	WB	Conjugation	Unconjugated
Form / Buffer	Liquid in 0.42% Potassium phosphate, 0.87% Sodium chloride, pH 7.3, 30% glycerol, and 0.01% sodium azide.		Storage at -20°C

BACKGROUND

Histone demethylase required for brain development. Specifically demethylates dimethylated 'Lys-9', 'Lys-27' and 'Lys-36' (H3K9me2, H3K27me2, H3K36me2, respectively) of histone H3 and monomethylated histone H4 'Lys-20' residue (H4K20Me1), thereby playing a central role in histone code of histone H3 and monomethylated histone H4 'Lys-20' residue (H4K20Me1), thereby playing a central role in histone code . Specifically binds trimethylated 'Lys-4' of histone H3 (H3K4me3), affecting histone demethylase specificity: in presence of H3K4me3, it has no demethylase activity toward H3K9me2, while it has high activity toward H3K27me2. Demethylates H3K9me2 in absence of H3K4me3 .

APPLICATION

To ensure optimal assay performance, AREX recommends conducting reagent titration tailored to each testing system for optimal detection results.

WB	1:500 - 1:2000
----	----------------

*Results are sample-specific. Please refer to your local assay conditions and test parameters for reference.

PRODUCT OVERVIEW

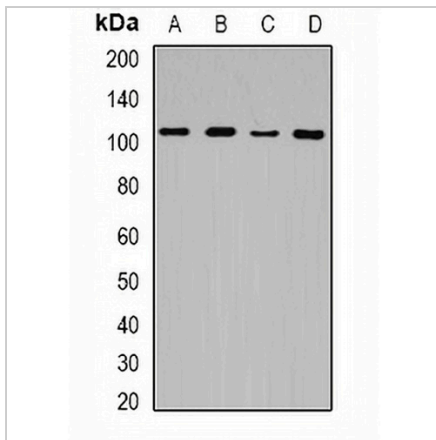
Description	Rabbit polyclonal antibody to JHDM1D
Specificity	Recognizes endogenous levels of JHDM1D protein.
Antibody Type	Primary antibody
Immunogen	Recombinant fusion protein of human JHDM1D
Purification	The antibody was purified by immunogen affinity chromatography.
Molecular Weight	Predicted: 106 kD; Observed: 106 kD
Form/Buffer	Liquid in 0.42% Potassium phosphate, 0.87% Sodium chloride, pH 7.3, 30% glycerol, and 0.01% sodium azide.
Alternative Names	JHDM1D; KDM7; KIAA1718; Lysine-specific demethylase 7A; JmjC domain-containing histone demethylation protein 1D; Lysine-specific demethylase 7
Gene Symbol	KDM7A
Entrez Gene	80853(Human); 338523(Mouse)
SwissProt	Q6ZMT4(Human); Q3UWM4(Mouse)

*AREX continuously optimizes our products. Webpage content may not reflect the latest updates. For inquiries, please contact info@arexbio.com or your local distributor.

*Clone Number, Reactivity, Source/Host and Clonality can be found in the product name and Key Features section above.

DATASHEET**JHDM1D Rabbit Polyclonal Antibody**

CAT. NO. APA13251

DATA

Western blot analysis of JHDM1D expression in HeLa (A), HEK293T (B), mouse spleen (C), rat brain (D) whole cell lysates. (Predicted band size: 106 kD; Observed band size: 106 kD)

STORAGE

Store at 4°C short term. For long term storage, store at -20°C, avoiding freeze/thaw cycles.

NOTE

For Research Use Only. Not for diagnostic, therapeutics, prophylactic or in vivo use.