

DATASHEET

ATAD3B Rabbit Polyclonal Antibody

CAT. NO. APA13252

KEY FEATURES

Target	ATAD3B	Source / Host	Rabbit
Reactivity	Human	Clonality	Polyclonal
Applications	WB	Conjugation	Unconjugated
Form / Buffer	Liquid in 0.42% Potassium phosphate, 0.87% Sodium chloride, pH 7.3, 30% glycerol, and 0.01% sodium azide.		Storage at -20°C

BACKGROUND

May play a role in a mitochondrial network organization typical for stem cells, characterized by reduced mitochondrial metabolism, low mtDNA copies and fragmented mitochondrial network. May act by suppressing ATAD3A function, interfering with ATAD3A interaction with matrix nucleoid complexes.

APPLICATION

To ensure optimal assay performance, AREX recommends conducting reagent titration tailored to each testing system for optimal detection results.

WB	1:500 - 1:1000
----	----------------

*Results are sample-specific. Please refer to your local assay conditions and test parameters for reference.

PRODUCT OVERVIEW

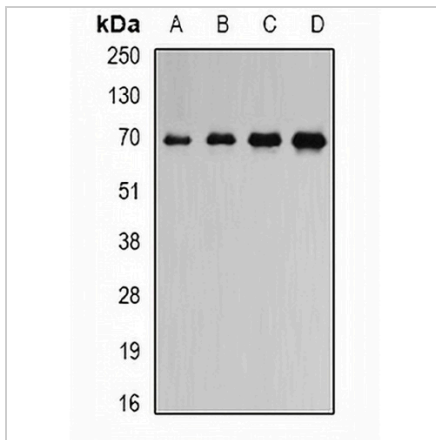
Description	Rabbit polyclonal antibody to ATAD3B
Specificity	Recognizes endogenous levels of ATAD3B protein.
Antibody Type	Primary antibody
Immunogen	Recombinant fusion protein of human ATAD3B
Purification	The antibody was purified by immunogen affinity chromatography.
Molecular Weight	Predicted: 19; Observed: 68 kD
Form/Buffer	Liquid in 0.42% Potassium phosphate, 0.87% Sodium chloride, pH 7.3, 30% glycerol, and 0.01% sodium azide.
Alternative Names	KIAA1273; TOB3; ATPase family AAA domain-containing protein 3B; AAA-TOB3
Gene Symbol	ATAD3B
Entrez Gene	83858(Human)
SwissProt	Q5T9A4(Human)

*AREX continuously optimizes our products. Webpage content may not reflect the latest updates. For inquiries, please contact info@arexbio.com or your local distributor.

*Clone Number, Reactivity, Source/Host and Clonality can be found in the product name and Key Features section above.

DATASHEET**ATAD3B Rabbit Polyclonal Antibody**

CAT. NO. APA13252

DATA

Western blot analysis of ATAD3B expression in NIH3T3 (A), mouse heart (B), mouse spleen (C), rat brain (D) whole cell lysates. (Predicted band size: 19; 67; 72 kD; Observed band size: 68 kD)

STORAGE

Store at 4°C short term. For long term storage, store at -20°C, avoiding freeze/thaw cycles.

NOTE

For Research Use Only. Not for diagnostic, therapeutics, prophylactic or in vivo use.