

DATASHEET
DCP2 Rabbit Polyclonal Antibody
CAT. NO. APA13254
KEY FEATURES

Target	DCP2	Source / Host	Rabbit
Reactivity	Human, Mouse, Rat	Clonality	Polyclonal
Applications	WB	Conjugation	Unconjugated
Form / Buffer	Liquid in 0.42% Potassium phosphate, 0.87% Sodium chloride, pH 7.3, 30% glycerol, and 0.01% sodium azide.		Storage at -20°C

BACKGROUND

Decapping metalloenzyme that catalyzes the cleavage of the cap structure on mRNAs . Removes the 7-methyl guanine cap structure from mRNA molecules, yielding a 5'-phosphorylated mRNA fragment and 7m-GDP . Necessary for the degradation of mRNAs, both in normal mRNA turnover and in nonsense-mediated mRNA decay . Plays a role in replication-dependent histone mRNA degradation . Has higher activity towards mRNAs that lack a poly(A) tail . Has no activity towards a cap structure lacking an RNA moiety . The presence of a N(6)-methyladenosine methylation at the second transcribed position of mRNAs (N(6),2'-O-dimethyladenosine cap; m6A(m)) provides resistance to DCP2-mediated decapping .

APPLICATION

To ensure optimal assay performance, AREX recommends conducting reagent titration tailored to each testing system for optimal detection results.

WB	1:500 - 1:1000
----	----------------

*Results are sample-specific. Please refer to your local assay conditions and test parameters for reference.

PRODUCT OVERVIEW

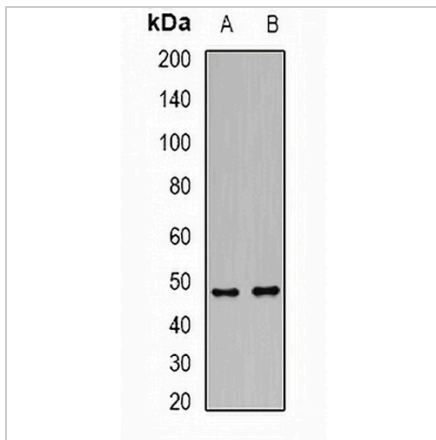
Description	Rabbit polyclonal antibody to DCP2
Specificity	Recognizes endogenous levels of DCP2 protein.
Antibody Type	Primary antibody
Immunogen	Recombinant fusion protein of human DCP2
Purification	The antibody was purified by immunogen affinity chromatography.
Molecular Weight	Predicted: 44; Observed: 48 kD
Form/Buffer	Liquid in 0.42% Potassium phosphate, 0.87% Sodium chloride, pH 7.3, 30% glycerol, and 0.01% sodium azide.
Alternative Names	NUDT20; m7GpppN-mRNA hydrolase; Nucleoside diphosphate-linked moiety X motif 20; Nudix motif 20; mRNA-decapping enzyme 2; hDpc
Gene Symbol	DCP2
Entrez Gene	167227(Human); 70640(Mouse)
SwissProt	Q8IU60(Human); Q9CYC6(Mouse)

*AREX continuously optimizes our products. Webpage content may not reflect the latest updates. For inquiries, please contact info@arexbio.com or your local distributor.

*Clone Number, Reactivity, Source/Host and Clonality can be found in the product name and Key Features section above.

DATASHEET**DCP2 Rabbit Polyclonal Antibody**

CAT. NO. APA13254

DATA

Western blot analysis of DCP2 expression in HT29 (A), rat brain (B) whole cell lysates.
(Predicted band size: 44; 48 kD; Observed band size: 48 kD)

STORAGE

Store at 4°C short term. For long term storage, store at -20°C, avoiding freeze/thaw cycles.

NOTE

For Research Use Only. Not for diagnostic, therapeutics, prophylactic or in vivo use.