

DATASHEET

CEP44 Rabbit Polyclonal Antibody

CAT. NO. APA13257

KEY FEATURES

Target	CEP44	Source / Host	Rabbit
Reactivity	Human, Mouse, Rat	Clonality	Polyclonal
Applications	WB	Conjugation	Unconjugated
Form / Buffer	Liquid in 0.42% Potassium phosphate, 0.87% Sodium chloride, pH 7.3, 30% glycerol, and 0.01% sodium azide.		Storage at -20°C

BACKGROUND

Centriole-enriched microtubule-binding protein involved in centriole biogenesis. In collaboration with CEP295 and POC1B, is required for the centriole-to-centrosome conversion by ensuring the formation of bona fide centriole wall . Functions as a linker component that maintains centrosome cohesion. Associates with CROCC and regulates its stability and localization to the centrosome .

APPLICATION

To ensure optimal assay performance, AREX recommends conducting reagent titration tailored to each testing system for optimal detection results.

WB	1:500 - 1:2000
----	----------------

*Results are sample-specific. Please refer to your local assay conditions and test parameters for reference.

PRODUCT OVERVIEW

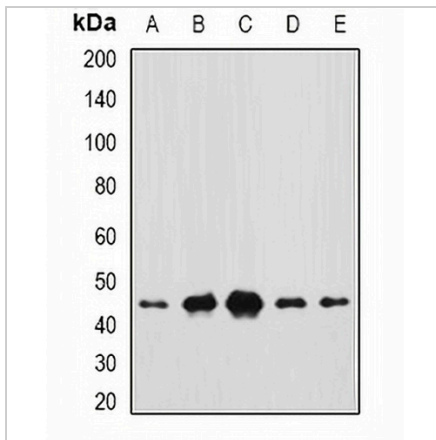
Description	Rabbit polyclonal antibody to CEP44
Specificity	Recognizes endogenous levels of CEP44 protein.
Antibody Type	Primary antibody
Immunogen	Recombinant fusion protein of human CEP44
Purification	The antibody was purified by immunogen affinity chromatography.
Molecular Weight	Predicted: 44 kD; Observed: 45 kD
Form/Buffer	Liquid in 0.42% Potassium phosphate, 0.87% Sodium chloride, pH 7.3, 30% glycerol, and 0.01% sodium azide.
Alternative Names	KIAA1712; Centrosomal protein of 44 kDa; Cep44; HBV PreS1-transactivated protein 3; PS1TP3
Gene Symbol	CEP44
Entrez Gene	80817(Human); 382010(Mouse); 290722(Rat)
SwissProt	Q9C0F1(Human); Q5HZK1(Mouse); Q3B7T8(Rat)

*AREX continuously optimizes our products. Webpage content may not reflect the latest updates. For inquiries, please contact info@arexbio.com or your local distributor.

*Clone Number, Reactivity, Source/Host and Clonality can be found in the product name and Key Features section above.

DATASHEET**CEP44 Rabbit Polyclonal Antibody**

CAT. NO. APA13257

DATA

Western blot analysis of CEP44 expression in Jurkat (A), MCF7 (B), mouse testis (C), mouse liver (D), rat brain (E) whole cell lysates. (Predicted band size: 44 kD; Observed band size: 45 kD)

STORAGE

Store at 4°C short term. For long term storage, store at -20°C, avoiding freeze/thaw cycles.

NOTE

For Research Use Only. Not for diagnostic, therapeutics, prophylactic or in vivo use.