

**DATASHEET**

**AP1-mu-2 Rabbit Polyclonal Antibody**

CAT. NO. APA13258

**KEY FEATURES**

Target	AP1-mu-2	Source / Host	Rabbit
Reactivity	Human, Mouse	Clonality	Polyclonal
Applications	WB, IF/ICC	Conjugation	Unconjugated
Form / Buffer	Liquid in 0.42% Potassium phosphate, 0.87% Sodium chloride, pH 7.3, 30% glycerol, and 0.01% sodium azide.		Storage at -20°C

**BACKGROUND**

Subunit of clathrin-associated adaptor protein complex 1 that plays a role in protein sorting in the trans-Golgi network (TGN) and endosomes. The AP complexes mediate the recruitment of clathrin to membranes and the recognition of sorting signals within the cytosolic tails of transmembrane cargo molecules.

**APPLICATION**

To ensure optimal assay performance, AREX recommends conducting reagent titration tailored to each testing system for optimal detection results.

WB	1:500 - 1:1000
IF/ICC	1:50 - 1:200

\*Results are sample-specific. Please refer to your local assay conditions and test parameters for reference.

**PRODUCT OVERVIEW**

Description	Rabbit polyclonal antibody to AP1-mu-2
Specificity	Recognizes endogenous levels of AP1-mu-2 protein.
Antibody Type	Primary antibody
Immunogen	Recombinant fusion protein of human AP1-mu-2
Purification	The antibody was purified by immunogen affinity chromatography.
Molecular Weight	Predicted: 48 kD; Observed: 48 kD
Form/Buffer	Liquid in 0.42% Potassium phosphate, 0.87% Sodium chloride, pH 7.3, 30% glycerol, and 0.01% sodium azide.
Alternative Names	AP-1 complex subunit mu-2; AP-mu chain family member mu1B; Adaptor protein complex AP-1 subunit mu-2; Adaptor-related protein complex 1 subunit mu-2; Clathrin assembly protein complex 1 mu-2 medium chain 2; Golgi adaptor HA1/AP1 adaptin mu-2 subunit; Mu-adaptin 2; Mu1B-adaptin
Gene Symbol	AP1M2
Entrez Gene	10053(Human); 11768(Mouse)
SwissProt	Q9Y6Q5(Human); Q9WVP1(Mouse)

\*AREX continuously optimizes our products. Webpage content may not reflect the latest updates. For inquiries, please contact [info@arexbio.com](mailto:info@arexbio.com) or your local distributor.

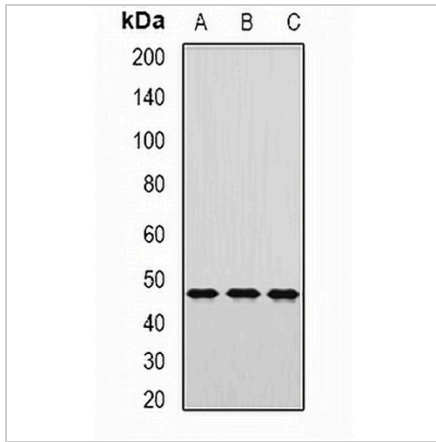
\*Clone Number, Reactivity, Source/Host and Clonality can be found in the product name and Key Features section above.

**DATASHEET**

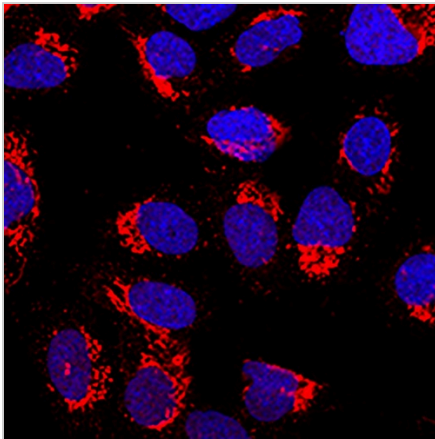
**AP1-mu-2 Rabbit Polyclonal Antibody**

CAT. NO. APA13258

**DATA**



Western blot analysis of AP1-mu-2 expression in HepG2 (A), mouse kidney (B), mouse lung (C) whole cell lysates. (Predicted band size: 48 kD; Observed band size: 48 kD)



Immunofluorescent analysis of AP1-mu-2 staining in U2OS cells. Formalin-fixed cells were permeabilized with 0.1% Triton X-100 in TBS for 5-10 minutes and blocked with 3% BSA-PBS for 30 minutes at room temperature. Cells were probed with the primary antibody in 3% BSA-PBS and incubated overnight at 4 °C in a humidified chamber. Cells were washed with PBST and incubated with a AREX® Fluor 594-conjugated secondary antibody (red) in PBS at room temperature in the dark. DAPI was used to stain the cell nuclei (blue).

**STORAGE**

Store at 4°C short term. For long term storage, store at -20°C, avoiding freeze/thaw cycles.

**NOTE**

For Research Use Only. Not for diagnostic, therapeutics, prophylactic or in vivo use.