

**DATASHEET**

**Ribophorin-2 Rabbit Polyclonal Antibody**

CAT. NO. APA13264

**KEY FEATURES**

Target	Ribophorin-2	Source / Host	Rabbit
Reactivity	Human, Mouse, Rat	Clonality	Polyclonal
Applications	WB	Conjugation	Unconjugated
Form / Buffer	Liquid in 0.42% Potassium phosphate, 0.87% Sodium chloride, pH 7.3, 30% glycerol, and 0.01% sodium azide.		Storage at -20°C

**BACKGROUND**

Subunit of the oligosaccharyl transferase (OST) complex that catalyzes the initial transfer of a defined glycan (Glc(3)Man(9)GlcNAc(2) in eukaryotes) from the lipid carrier dolichol-pyrophosphate to an asparagine residue within an Asn-X-Ser/Thr consensus motif in nascent polypeptide chains, the first step in protein N-glycosylation complex that catalyzes the initial transfer of a defined glycan (Glc(3)Man(9)GlcNAc(2) in eukaryotes) from the lipid carrier dolichol-pyrophosphate to an asparagine residue within an Asn-X-Ser/Thr consensus motif in nascent polypeptide chains, the first step in protein N-glycosylation .

**APPLICATION**

To ensure optimal assay performance, AREX recommends conducting reagent titration tailored to each testing system for optimal detection results.

WB	1:500 - 1:1000
----	----------------

\*Results are sample-specific. Please refer to your local assay conditions and test parameters for reference.

**PRODUCT OVERVIEW**

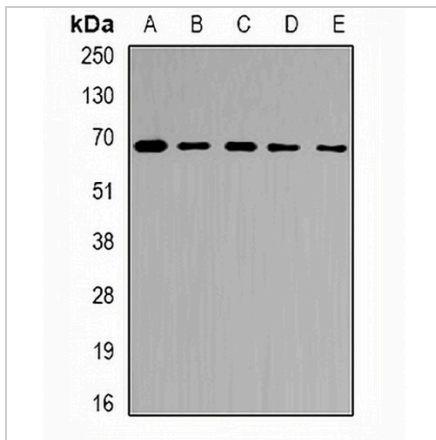
Description	Rabbit polyclonal antibody to Ribophorin-2
Specificity	Recognizes endogenous levels of Ribophorin-2 protein.
Antibody Type	Primary antibody
Immunogen	Recombinant fusion protein of human Ribophorin-2
Purification	The antibody was purified by immunogen affinity chromatography.
Molecular Weight	Predicted: 67; Observed: 69 kD
Form/Buffer	Liquid in 0.42% Potassium phosphate, 0.87% Sodium chloride, pH 7.3, 30% glycerol, and 0.01% sodium azide.
Alternative Names	Dolichyl-diphosphooligosaccharide--protein glycosyltransferase subunit 2; Dolichyl-diphosphooligosaccharide--protein glycosyltransferase 63 kDa subunit; RIBIIR; Ribophorin II; RPN-II; Ribophorin-2
Gene Symbol	RPN2
Entrez Gene	6185(Human); 20014(Mouse); 64701(Rat)
SwissProt	P04844(Human); Q9DBG6(Mouse); P25235(Rat)

\*AREX continuously optimizes our products. Webpage content may not reflect the latest updates. For inquiries, please contact [info@arexbio.com](mailto:info@arexbio.com) or your local distributor.

\*Clone Number, Reactivity, Source/Host and Clonality can be found in the product name and Key Features section above.

**DATASHEET****Ribophorin-2 Rabbit Polyclonal Antibody**

CAT. NO. APA13264

**DATA**

Western blot analysis of Ribophorin-2 expression in Jurkat (A), MCF7 (B), NIH3T3 (C), mouse liver (D), rat liver (E) whole cell lysates. (Predicted band size: 67; 69 kD; Observed band size: 69 kD)

**STORAGE**

Store at 4°C short term. For long term storage, store at -20°C, avoiding freeze/thaw cycles.

**NOTE**

For Research Use Only. Not for diagnostic, therapeutics, prophylactic or in vivo use.