

DATASHEET

HLTF Rabbit Polyclonal Antibody

CAT. NO. APA13265

KEY FEATURES

Target	HLTF	Source / Host	Rabbit
Reactivity	Human, Rat	Clonality	Polyclonal
Applications	WB	Conjugation	Unconjugated
Form / Buffer	Liquid in 0.42% Potassium phosphate, 0.87% Sodium chloride, pH 7.3, 30% glycerol, and 0.01% sodium azide.		Storage at -20°C

BACKGROUND

Functions as a DNA-dependent ATPase and E3 ubiquitin-protein ligase involved in chromatin regulation and DNA damage tolerance (DDT) . Catalyzes 'Lys-63'-linked polyubiquitination of monoubiquitinated PCNA at 'Lys-164' in response to genotoxic stress, promoting error-free postreplication repair via template switching . Acts as an epigenetic regulator by promoting recruitment of DNMT1, thereby ensuring DNA methylation inheritance: specifically binds histone H3 trimethylated at 'Lys-9' (H3K9me3) and mediates histone H3 'Lys-23' polyubiquitination (H3K23ub), a docking site for DNMT1, leading to DNMT1 recruitment and replication-coupled DNA methylation maintenance .

APPLICATION

To ensure optimal assay performance, AREX recommends conducting reagent titration tailored to each testing system for optimal detection results.

WB	1:500 - 1:2000
----	----------------

*Results are sample-specific. Please refer to your local assay conditions and test parameters for reference.

PRODUCT OVERVIEW

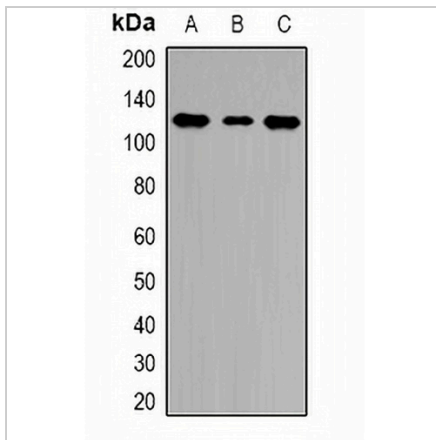
Description	Rabbit polyclonal antibody to HLTF
Specificity	Recognizes endogenous levels of HLTF protein.
Antibody Type	Primary antibody
Immunogen	Recombinant fusion protein of human HLTF
Purification	The antibody was purified by immunogen affinity chromatography.
Molecular Weight	Predicted: 99; Observed: 114 kD
Form/Buffer	Liquid in 0.42% Potassium phosphate, 0.87% Sodium chloride, pH 7.3, 30% glycerol, and 0.01% sodium azide.
Alternative Names	HIP116A; RNF80; SMARCA3; SNF2L3; ZBU1; Helicase-like transcription factor; DNA-binding protein/plasminogen activator inhibitor 1 regulator; HIP116; RING finger protein 80; SWI/SNF-related matrix-associated actin-dependent regulator of chromatin subfamily A member 3; Sucrose nonfermenting protein 2-like 3
Gene Symbol	HLTF
Entrez Gene	6596(Human)
SwissProt	Q14527(Human)

*AREX continuously optimizes our products. Webpage content may not reflect the latest updates. For inquiries, please contact info@arexbio.com or your local distributor.

*Clone Number, Reactivity, Source/Host and Clonality can be found in the product name and Key Features section above.

DATASHEET**HLTF Rabbit Polyclonal Antibody**

CAT. NO. APA13265

DATA

Western blot analysis of HLTF expression in HEK293T (A), A549 (B), HeLa (C) whole cell lysates. (Predicted band size: 99; 113 kD; Observed band size: 114 kD)

STORAGE

Store at 4°C short term. For long term storage, store at -20°C, avoiding freeze/thaw cycles.

NOTE

For Research Use Only. Not for diagnostic, therapeutics, prophylactic or in vivo use.