

DATASHEET

XPC Rabbit Polyclonal Antibody

CAT. NO. APA13266

KEY FEATURES

Target	XPC	Source / Host	Rabbit
Reactivity	Human	Clonality	Polyclonal
Applications	WB, IHC	Conjugation	Unconjugated
Form / Buffer	Liquid in 0.42% Potassium phosphate, 0.87% Sodium chloride, pH 7.3, 30% glycerol, and 0.01% sodium azide.		Storage at -20°C

BACKGROUND

Involved in global genome nucleotide excision repair (GG-NER) by acting as damage sensing and DNA-binding factor component of the XPC complex by acting as damage sensing and DNA-binding factor component of the XPC complex . Has only a low DNA repair activity by itself which is stimulated by RAD23B and RAD23A. Has a preference to bind DNA containing a short single-stranded segment but not to damaged oligonucleotides . This feature is proposed to be related to a dynamic sensor XPC can rapidly screen duplex DNA for non-hydrogen-bonded bases by forming a transient nucleoprotein intermediate complex which matures into a stable recognition complex through an intrinsic single-stranded DNA-binding activity .

APPLICATION

To ensure optimal assay performance, AREX recommends conducting reagent titration tailored to each testing system for optimal detection results.

WB	1:500 - 1:2000
IHC	1:50 - 1:100

*Results are sample-specific. Please refer to your local assay conditions and test parameters for reference.

PRODUCT OVERVIEW

Description	Rabbit polyclonal antibody to XPC
Specificity	Recognizes endogenous levels of XPC protein.
Antibody Type	Primary antibody
Immunogen	Recombinant fusion protein of human XPC
Purification	The antibody was purified by immunogen affinity chromatography.
Molecular Weight	Predicted: 15; Observed: 130 kD
Form/Buffer	Liquid in 0.42% Potassium phosphate, 0.87% Sodium chloride, pH 7.3, 30% glycerol, and 0.01% sodium azide.
Alternative Names	XPCC; DNA repair protein complementing XP-C cells; Xeroderma pigmentosum group C-complementing protein; p125
Gene Symbol	XPC
Entrez Gene	7508(Human)
SwissProt	Q01831(Human)

*AREX continuously optimizes our products. Webpage content may not reflect the latest updates. For inquiries, please contact info@arexbio.com or your local distributor.

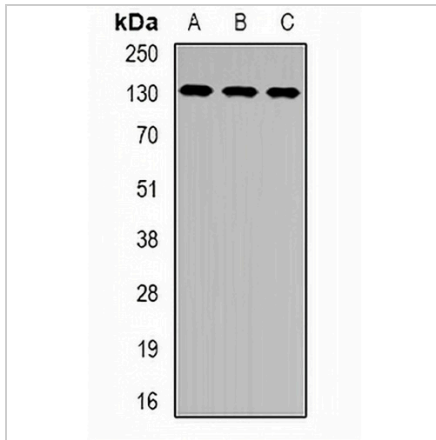
*Clone Number, Reactivity, Source/Host and Clonality can be found in the product name and Key Features section above.

DATASHEET

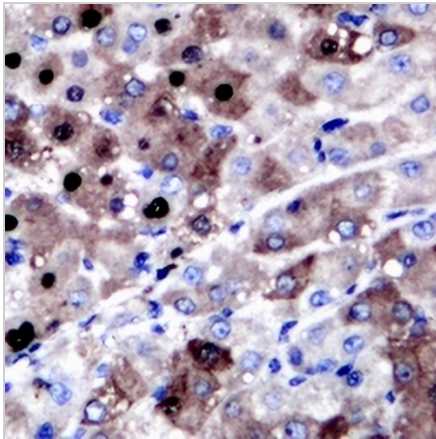
XPC Rabbit Polyclonal Antibody

CAT. NO. APA13266

DATA



Western blot analysis of XPC expression in HeLa (A), HEK293T (B), Jurkat (C) whole cell lysates. (Predicted band size: 15; 101; 105 kD; Observed band size: 130 kD)



Immunohistochemical analysis of XPC staining in human liver cancer formalin fixed paraffin embedded tissue section. The section was pre-treated using heat mediated antigen retrieval with sodium citrate buffer (pH 6.0). The section was then incubated with the antibody at room temperature and detected using an HRP conjugated compact polymer system. DAB was used as the chromogen. The section was then counterstained with haematoxylin and mounted with DPX.

STORAGE

Store at 4°C short term. For long term storage, store at -20°C, avoiding freeze/thaw cycles.

NOTE

For Research Use Only. Not for diagnostic, therapeutics, prophylactic or in vivo use.