

DATASHEET

PPP6R2 Rabbit Polyclonal Antibody

CAT. NO. APA13268

KEY FEATURES

Target	PPP6R2	Source / Host	Rabbit
Reactivity	Human	Clonality	Polyclonal
Applications	WB	Conjugation	Unconjugated
Form / Buffer	Liquid in 0.42% Potassium phosphate, 0.87% Sodium chloride, pH 7.3, 30% glycerol, and 0.01% sodium azide.		Storage at -20°C

BACKGROUND

Regulatory subunit of protein phosphatase 6 (PP6). May function as a scaffolding PP6 subunit. Involved in the PP6-mediated dephosphorylation of NFKBIE opposing its degradation in response to TNF.

APPLICATION

To ensure optimal assay performance, AREX recommends conducting reagent titration tailored to each testing system for optimal detection results.

WB	1:500 - 1:2000
----	----------------

*Results are sample-specific. Please refer to your local assay conditions and test parameters for reference.

PRODUCT OVERVIEW

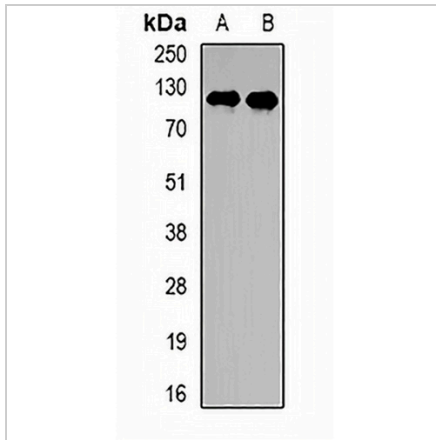
Description	Rabbit polyclonal antibody to PPP6R2
Specificity	Recognizes endogenous levels of PPP6R2 protein.
Antibody Type	Primary antibody
Immunogen	Recombinant fusion protein of human PPP6R2
Purification	The antibody was purified by immunogen affinity chromatography.
Molecular Weight	Predicted: 98; Observed: 105 kD
Form/Buffer	Liquid in 0.42% Potassium phosphate, 0.87% Sodium chloride, pH 7.3, 30% glycerol, and 0.01% sodium azide.
Alternative Names	KIAA0685; PP6R2; SAPS2; Serine/threonine-protein phosphatase 6 regulatory subunit 2; SAPS domain family member 2
Gene Symbol	PPP6R2
Entrez Gene	9701(Human)
SwissProt	O75170(Human)

*AREX continuously optimizes our products. Webpage content may not reflect the latest updates. For inquiries, please contact info@arexbio.com or your local distributor.

*Clone Number, Reactivity, Source/Host and Clonality can be found in the product name and Key Features section above.

DATASHEET**PPP6R2 Rabbit Polyclonal Antibody**

CAT. NO. APA13268

DATA

Western blot analysis of PPP6R2 expression in HepG2 (A), Jurkat (B) whole cell lysates.
(Predicted band size: 98; 101; 104 kD; Observed band size: 105 kD)

STORAGE

Store at 4°C short term. For long term storage, store at -20°C, avoiding freeze/thaw cycles.

NOTE

For Research Use Only. Not for diagnostic, therapeutics, prophylactic or in vivo use.