

DATASHEET

ABCB8 Rabbit Polyclonal Antibody

CAT. NO. APA13275

KEY FEATURES

Target	ABCB8	Source / Host	Rabbit
Reactivity	Human, Mouse, Rat	Clonality	Polyclonal
Applications	WB, IHC, IF/ICC	Conjugation	Unconjugated
Form / Buffer	Liquid in 0.42% Potassium phosphate, 0.87% Sodium chloride, pH 7.3, 30% glycerol, and 0.01% sodium azide.		Storage at -20°C

BACKGROUND

ATP-binding subunit of the mitochondrial ATP-gated potassium channel (mitoK(ATP)) . Together with pore-forming subunit CCDC51/MITOK of the mitoK(ATP) channel, mediates ATP-dependent potassium currents across the mitochondrial inner membrane . An increase in ATP intracellular levels closes the channel, inhibiting K(+) transport, whereas a decrease in ATP levels enhances K(+) uptake in the mitochondrial matrix . Plays a role in mitochondrial iron transport . Required for maintenance of normal cardiac function, possibly by influencing mitochondrial iron export and regulating the maturation of cytosolic iron sulfur cluster-containing enzymes .

APPLICATION

To ensure optimal assay performance, AREX recommends conducting reagent titration tailored to each testing system for optimal detection results.

WB	1:500 - 1:2000
IHC	1:50 - 1:200
IF/ICC	1:50 - 1:200

*Results are sample-specific. Please refer to your local assay conditions and test parameters for reference.

PRODUCT OVERVIEW

Description	Rabbit polyclonal antibody to ABCB8
Specificity	Recognizes endogenous levels of ABCB8 protein.
Antibody Type	Primary antibody
Immunogen	Recombinant fusion protein of human ABCB8
Purification	The antibody was purified by immunogen affinity chromatography.
Molecular Weight	Predicted: 59; Observed: 80 kD
Form/Buffer	Liquid in 0.42% Potassium phosphate, 0.87% Sodium chloride, pH 7.3, 30% glycerol, and 0.01% sodium azide.
Alternative Names	MABC1; ATP-binding cassette sub-family B member 8 mitochondrial; Mitochondrial ATP-binding cassette 1; M-ABC1
Gene Symbol	ABCB8
Entrez Gene	11194(Human); 74610(Mouse); 362302(Rat)
SwissProt	Q9NUT2(Human); Q9CXJ4(Mouse); Q5RKI8(Rat)

*AREX continuously optimizes our products. Webpage content may not reflect the latest updates. For inquiries, please contact info@arexbio.com or your local distributor.

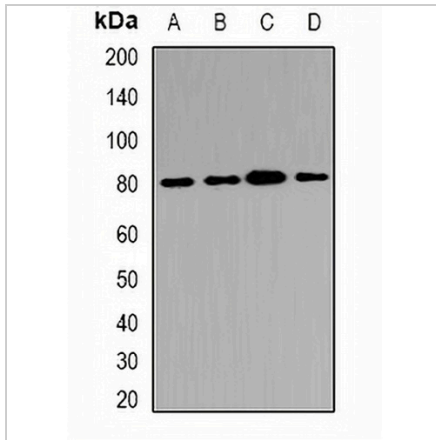
*Clone Number, Reactivity, Source/Host and Clonality can be found in the product name and Key Features section above.

DATASHEET

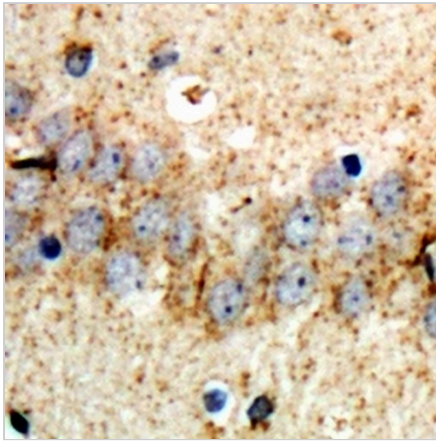
ABCB8 Rabbit Polyclonal Antibody

CAT. NO. APA13275

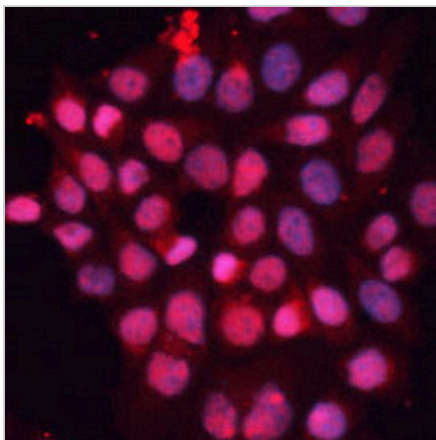
DATA



Western blot analysis of ABCB8 expression in HeLa (A), HepG2 (B), mouse kidney (C), rat heart (D) whole cell lysates. (Predicted band size: 59; 68; 75; 78; 79 kD; Observed band size: 80 kD)



Immunohistochemical analysis of ABCB8 staining in rat brain formalin fixed paraffin embedded tissue section. The section was pre-treated using heat mediated antigen retrieval with sodium citrate buffer (pH 6.0). The section was then incubated with the antibody at room temperature and detected using an HRP conjugated compact polymer system. DAB was used as the chromogen. The section was then counterstained with haematoxylin and mounted with DPX.



Immunofluorescent analysis of ABCB8 staining in HeLa cells. Formalin-fixed cells were permeabilized with 0.1% Triton X-100 in TBS for 5-10 minutes and blocked with 3% BSA-PBS for 30 minutes at room temperature. Cells were probed with the primary antibody in 3% BSA-PBS and incubated overnight at 4 °C in a humidified chamber. Cells were washed with PBST and incubated with a AREX® Fluor 594-conjugated secondary antibody (red) in PBS at room temperature in the dark. DAPI was used to stain the cell nuclei (blue).

STORAGE

Store at 4°C short term. For long term storage, store at -20°C, avoiding freeze/thaw cycles.

NOTE

For Research Use Only. Not for diagnostic, therapeutics, prophylactic or in vivo use.