

**DATASHEET**

**MRP1 Rabbit Polyclonal Antibody**

CAT. NO. APA13276

**KEY FEATURES**

Target	MRP1	Source / Host	Rabbit
Reactivity	Human, Mouse, Rat	Clonality	Polyclonal
Applications	WB, IHC	Conjugation	Unconjugated
Form / Buffer	Liquid in 0.42% Potassium phosphate, 0.87% Sodium chloride, pH 7.3, 30% glycerol, and 0.01% sodium azide.		Storage at-20°C

**BACKGROUND**

Mediates export of organic anions and drugs from the cytoplasm . Mediates ATP-dependent transport of glutathione and glutathione conjugates, leukotriene C4, estradiol-17-beta-o-glucuronide, methotrexate, antiviral drugs and other xenobiotics . Confers resistance to anticancer drugs by decreasing accumulation of drug in cells, and by mediating ATP- and GSH-dependent drug export . Hydrolyzes ATP with low efficiency . Catalyzes the export of sphingosine 1-phosphate from mast cells independently of their degranulation . Participates in inflammatory response by allowing export of leukotriene C4 from leukotriene C4-synthesizing cells . Mediates ATP-dependent, GSH-independent cyclic GMP-AMP (cGAMP) export .

**APPLICATION**

To ensure optimal assay performance, AREX recommends conducting reagent titration tailored to each testing system for optimal detection results.

WB	1:500 - 1:1000
IHC	1:50 - 1:200

\*Results are sample-specific. Please refer to your local assay conditions and test parameters for reference.

**PRODUCT OVERVIEW**

Description	Rabbit polyclonal antibody to MRP1
Specificity	Recognizes endogenous levels of MRP1 protein.
Antibody Type	Primary antibody
Immunogen	KLH-conjugated synthetic peptide of human MRP1
Purification	The antibody was purified by immunogen affinity chromatography.
Molecular Weight	Predicted: 151-172 kD; Observed: 210 kD
Form/Buffer	Liquid in 0.42% Potassium phosphate, 0.87% Sodium chloride, pH 7.3, 30% glycerol, and 0.01% sodium azide.
Alternative Names	MRP; MRP1; Multidrug resistance-associated protein 1; ATP-binding cassette sub-family C member 1; Leukotriene C(4) transporter; LTC4 transporter
Gene Symbol	ABCC1
Entrez Gene	4363(Human); 17250(Mouse); 24565(Rat)
SwissProt	P33527(Human); O35379(Mouse); Q8CG09(Rat)

\*AREX continuously optimizes our products. Webpage content may not reflect the latest updates. For inquiries, please contact [info@arexbio.com](mailto:info@arexbio.com) or your local distributor.

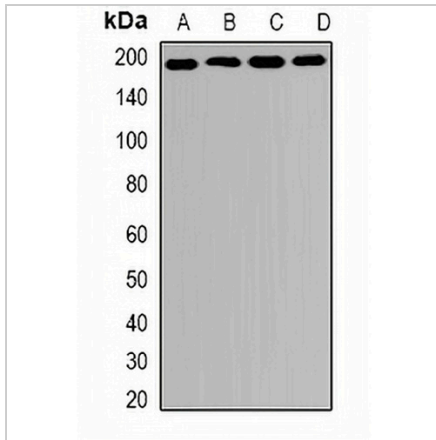
\*Clone Number, Reactivity, Source/Host and Clonality can be found in the product name and Key Features section above.

**DATASHEET**

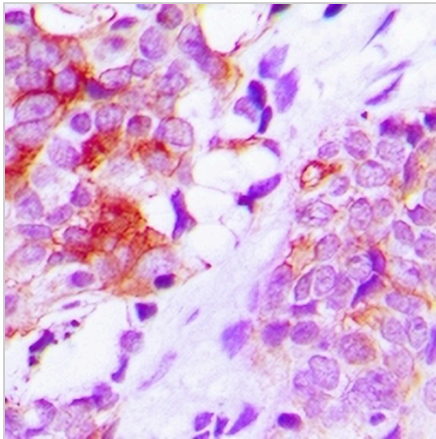
**MRP1 Rabbit Polyclonal Antibody**

CAT. NO. APA13276

**DATA**



Western blot analysis of MRP1 expression in HT29 (A), SKOV3 (B), mouse spleen (C), mouse lung (D) whole cell lysates. (Predicted band size: 151-172 kD; Observed band size: 210 kD)



Immunohistochemical analysis of MRP1 staining in human lung cancer formalin fixed paraffin embedded tissue section. The section was pre-treated using heat mediated antigen retrieval with sodium citrate buffer (pH 6.0). The section was then incubated with the antibody at room temperature and detected using an HRP conjugated compact polymer system. DAB was used as the chromogen. The section was then counterstained with haematoxylin and mounted with DPX.

**STORAGE**

Store at 4°C short term. For long term storage, store at -20°C, avoiding freeze/thaw cycles.

**NOTE**

For Research Use Only. Not for diagnostic, therapeutics, prophylactic or in vivo use.