

DATASHEET

ACADVL Rabbit Polyclonal Antibody

CAT. NO. APA13277

KEY FEATURES

Target	ACADVL	Source / Host	Rabbit
Reactivity	Human, Mouse, Rat	Clonality	Polyclonal
Applications	WB	Conjugation	Unconjugated
Form / Buffer	Liquid in 0.42% Potassium phosphate, 0.87% Sodium chloride, pH 7.3, 30% glycerol, and 0.01% sodium azide.		Storage at -20°C

BACKGROUND

Very long-chain specific acyl-CoA dehydrogenase is one of the acyl-CoA dehydrogenases that catalyze the first step of mitochondrial fatty acid beta-oxidation (FAO), breaking down fatty acids into acetyl-CoA and allowing the production of energy from fats, breaking down fatty acids into acetyl-CoA and allowing the production of energy from fats. The first step of FAO consists in the proR-proR stereospecific alpha, beta-dehydrogenation of fatty acyl-CoA thioesters using the electron transfer flavoprotein (ETF) as their physiologic electron acceptor, resulting in the formation of trans-2-enoyl-CoA ((2E)-enoyl-CoA).

APPLICATION

To ensure optimal assay performance, AREX recommends conducting reagent titration tailored to each testing system for optimal detection results.

WB	1:500 - 1:1000
----	----------------

*Results are sample-specific. Please refer to your local assay conditions and test parameters for reference.

PRODUCT OVERVIEW

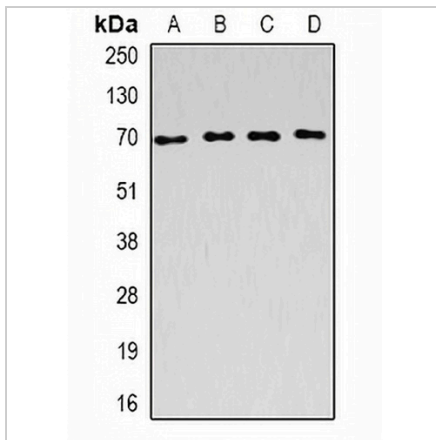
Description	Rabbit polyclonal antibody to ACADVL
Specificity	Recognizes endogenous levels of ACADVL protein.
Antibody Type	Primary antibody
Immunogen	KLH-conjugated synthetic peptide of human ACADVL
Purification	The antibody was purified by immunogen affinity chromatography.
Molecular Weight	Predicted: 68; Observed: 70 kD
Form/Buffer	Liquid in 0.42% Potassium phosphate, 0.87% Sodium chloride, pH 7.3, 30% glycerol, and 0.01% sodium azide.
Alternative Names	VLCAD; Very long-chain specific acyl-CoA dehydrogenase mitochondrial; VLCAD
Gene Symbol	ACADVL
Entrez Gene	37(Human); 11370(Mouse); 25363(Rat)
SwissProt	P49748(Human); P50544(Mouse); P45953(Rat)

*AREX continuously optimizes our products. Webpage content may not reflect the latest updates. For inquiries, please contact info@arexbio.com or your local distributor.

*Clone Number, Reactivity, Source/Host and Clonality can be found in the product name and Key Features section above.

DATASHEET**ACADVL Rabbit Polyclonal Antibody**

CAT. NO. APA13277

DATA

Western blot analysis of ACADVL expression in SW620 (A), Raji (B), mouse kidney (C), rat liver (D) whole cell lysates. (Predicted band size: 68; 70; 72 kD; Observed band size: 70 kD)

STORAGE

Store at 4°C short term. For long term storage, store at -20°C, avoiding freeze/thaw cycles.

NOTE

For Research Use Only. Not for diagnostic, therapeutics, prophylactic or in vivo use.