

DATASHEET

ADAM33 Rabbit Polyclonal Antibody

CAT. NO. APA13284

KEY FEATURES

| | | | |
|---------------|---|---------------|---------------------|
| Target | ADAM33 | Source / Host | Rabbit |
| Reactivity | Human, Mouse, Rat | Clonality | Polyclonal |
| Applications | WB | Conjugation | Unconjugated |
| Form / Buffer | Liquid in 0.42% Potassium phosphate, 0.87% Sodium chloride, pH 7.3, 30% glycerol, and 0.01% sodium azide. | | Storage at -20°C |

BACKGROUND

This gene encodes a member of the ADAM (a disintegrin and metalloprotease domain) family. Members of this family are membrane-anchored proteins structurally related to snake venom disintegrins, and have been implicated in a variety of biological processes involving cell-cell and cell-matrix interactions, including fertilization, muscle development, and neurogenesis. This protein is a type I transmembrane protein implicated in asthma and bronchial hyperresponsiveness. Alternative splicing results in multiple transcript variants encoding different isoforms.

APPLICATION

To ensure optimal assay performance, AREX recommends conducting reagent titration tailored to each testing system for optimal detection results.

| | |
|----|----------------|
| WB | 1:500 - 1:2000 |
|----|----------------|

*Results are sample-specific. Please refer to your local assay conditions and test parameters for reference.

PRODUCT OVERVIEW

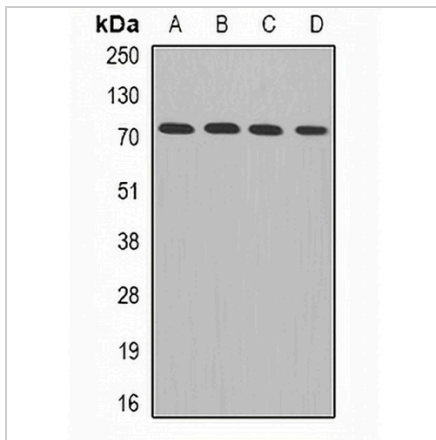
| | |
|-------------------|---|
| Description | Rabbit polyclonal antibody to ADAM33 |
| Specificity | Recognizes endogenous levels of ADAM33 protein. |
| Antibody Type | Primary antibody |
| Immunogen | Recombinant fusion protein of human ADAM33 |
| Purification | The antibody was purified by immunogen affinity chromatography. |
| Molecular Weight | Predicted: 32; Observed: 87 kD |
| Form/Buffer | Liquid in 0.42% Potassium phosphate, 0.87% Sodium chloride, pH 7.3, 30% glycerol, and 0.01% sodium azide. |
| Alternative Names | C20orf153; Disintegrin and metalloproteinase domain-containing protein 33; ADAM 33 |
| Gene Symbol | ADAM33 |
| Entrez Gene | 80332(Human) |
| SwissProt | Q9BZ11(Human) |

*AREX continuously optimizes our products. Webpage content may not reflect the latest updates. For inquiries, please contact info@arexbio.com or your local distributor.

*Clone Number, Reactivity, Source/Host and Clonality can be found in the product name and Key Features section above.

DATASHEET**ADAM33 Rabbit Polyclonal Antibody**

CAT. NO. APA13284

DATA

Western blot analysis of ADAM33 expression in Hela (A), MCF7 (B), mouse brain (C), rat heart (D) whole cell lysates. (Predicted band size: 32; 84; 87 kD; Observed band size: 87 kD)

STORAGE

Store at 4°C short term. For long term storage, store at -20°C, avoiding freeze/thaw cycles.

NOTE

For Research Use Only. Not for diagnostic, therapeutics, prophylactic or in vivo use.