

**DATASHEET**

**ADAM9 Rabbit Polyclonal Antibody**

CAT. NO. APA13285

**KEY FEATURES**

Target	ADAM9	Source / Host	Rabbit
Reactivity	Human, Mouse, Rat	Clonality	Polyclonal
Applications	WB, IF/ICC	Conjugation	Unconjugated
Form / Buffer	Liquid in 0.42% Potassium phosphate, 0.87% Sodium chloride, pH 7.3, 30% glycerol, and 0.01% sodium azide.		Storage at -20°C

**BACKGROUND**

Metalloprotease that cleaves and releases a number of molecules with important roles in tumorigenesis and angiogenesis, such as TEK, KDR, EPHB4, CD40, VCAM1 and CDH5. May mediate cell-cell, cell-matrix interactions and regulate the motility of cells via interactions with integrins.

**APPLICATION**

To ensure optimal assay performance, AREX recommends conducting reagent titration tailored to each testing system for optimal detection results.

WB	1:500 - 1:1000
IF/ICC	1:50 - 1:200

\*Results are sample-specific. Please refer to your local assay conditions and test parameters for reference.

**PRODUCT OVERVIEW**

Description	Rabbit polyclonal antibody to ADAM9
Specificity	Recognizes endogenous levels of ADAM9 protein.
Antibody Type	Primary antibody
Immunogen	Recombinant fusion protein of human ADAM9
Purification	The antibody was purified by immunogen affinity chromatography.
Molecular Weight	Predicted: 72; Observed: 100 kD
Form/Buffer	Liquid in 0.42% Potassium phosphate, 0.87% Sodium chloride, pH 7.3, 30% glycerol, and 0.01% sodium azide.
Alternative Names	KIAA0021; MCMP; MDC9; MLTNG; Disintegrin and metalloproteinase domain-containing protein 9; ADAM 9; Cellular disintegrin-related protein; Meltrin-gamma; Metalloprotease/disintegrin/cysteine-rich protein 9; Myeloma cell metalloproteinase
Gene Symbol	ADAM9
Entrez Gene	8754(Human); 11502(Mouse)
SwissProt	Q13443(Human); Q61072(Mouse)

\*AREX continuously optimizes our products. Webpage content may not reflect the latest updates. For inquiries, please contact [info@arexbio.com](mailto:info@arexbio.com) or your local distributor.

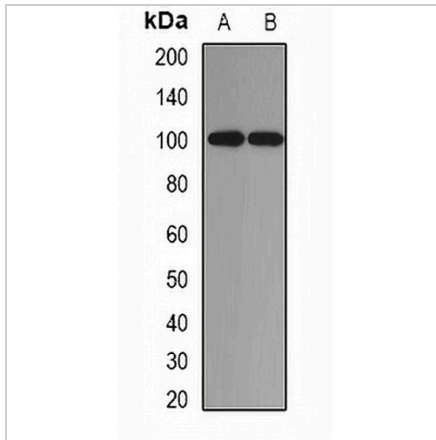
\*Clone Number, Reactivity, Source/Host and Clonality can be found in the product name and Key Features section above.

**DATASHEET**

**ADAM9 Rabbit Polyclonal Antibody**

CAT. NO. APA13285

**DATA**



Western blot analysis of ADAM9 expression in mouse kidney (A), mouse liver (B) whole cell lysates. (Predicted band size: 72; 90 kD; Observed band size: 100 kD)



Immunofluorescent analysis of ADAM9 staining in U2OS cells. Formalin-fixed cells were permeabilized with 0.1% Triton X-100 in TBS for 5-10 minutes and blocked with 3% BSA-PBS for 30 minutes at room temperature. Cells were probed with the primary antibody in 3% BSA-PBS and incubated overnight at 4 °C in a humidified chamber. Cells were washed with PBST and incubated with a DyLight 594-conjugated secondary antibody (red) in PBS at room temperature in the dark.

**STORAGE**

Store at 4°C short term. For long term storage, store at -20°C, avoiding freeze/thaw cycles.

**NOTE**

For Research Use Only. Not for diagnostic, therapeutics, prophylactic or in vivo use.