

DATASHEET

PACAP-R1 Rabbit Polyclonal Antibody

CAT. NO. APA13288

KEY FEATURES

Target	PACAP-R1	Source / Host	Rabbit
Reactivity	Human, Mouse, Rat	Clonality	Polyclonal
Applications	WB	Conjugation	Unconjugated
Form / Buffer	Liquid in 0.42% Potassium phosphate, 0.87% Sodium chloride, pH 7.3, 30% glycerol, and 0.01% sodium azide.		Storage at-20°C

BACKGROUND

G protein-coupled receptor activated by the neuropeptide pituitary adenylate cyclase-activating polypeptide (ADCYAP1/PACAP) . Binds both PACAP27 and PACAP38 bioactive peptides . Ligand binding causes a conformation change that triggers signaling via guanine nucleotide-binding proteins (G proteins) and modulates the activity of downstream effectors. Activates cAMP-dependent pathway . May regulate the release of adrenocorticotropin, luteinizing hormone, growth hormone, prolactin, epinephrine, and catecholamine. May play a role in spermatogenesis and sperm motility. Causes smooth muscle relaxation and secretion in the gastrointestinal tract .

APPLICATION

To ensure optimal assay performance, AREX recommends conducting reagent titration tailored to each testing system for optimal detection results.

WB	1:500 - 1:1000
----	----------------

*Results are sample-specific. Please refer to your local assay conditions and test parameters for reference.

PRODUCT OVERVIEW

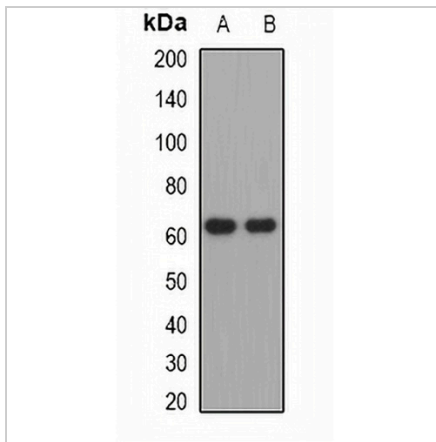
Description	Rabbit polyclonal antibody to PACAP-R1
Specificity	Recognizes endogenous levels of PACAP-R1 protein.
Antibody Type	Primary antibody
Immunogen	KLH-conjugated synthetic peptide of human PACAP-R1
Purification	The antibody was purified by immunogen affinity chromatography.
Molecular Weight	Predicted: 46; Observed: 61 kD
Form/Buffer	Liquid in 0.42% Potassium phosphate, 0.87% Sodium chloride, pH 7.3, 30% glycerol, and 0.01% sodium azide.
Alternative Names	Pituitary adenylate cyclase-activating polypeptide type I receptor; PACAP type I receptor; PACAP-R-1; PACAP-R1
Gene Symbol	ADCYAP1R1
Entrez Gene	117(Human); 11517(Mouse); 24167(Rat)
SwissProt	P41586(Human); P70205(Mouse); P32215(Rat)

*AREX continuously optimizes our products. Webpage content may not reflect the latest updates. For inquiries, please contact info@arexbio.com or your local distributor.

*Clone Number, Reactivity, Source/Host and Clonality can be found in the product name and Key Features section above.

DATASHEET**PACAP-R1 Rabbit Polyclonal Antibody**

CAT. NO. APA13288

DATA

Western blot analysis of PACAP-R1 expression in HeLa (A), SHSY5Y (B) whole cell lysates. (Predicted band size: 46; 51; 53; 54; 56 kD; Observed band size: 61 kD)

STORAGE

Store at 4°C short term. For long term storage, store at -20°C, avoiding freeze/thaw cycles.

NOTE

For Research Use Only. Not for diagnostic, therapeutics, prophylactic or in vivo use.