

**DATASHEET**

**AES Rabbit Polyclonal Antibody**

CAT. NO. APA13290

**KEY FEATURES**

Target	AES	Source / Host	Rabbit
Reactivity	Human, Mouse, Rat	Clonality	Polyclonal
Applications	WB	Conjugation	Unconjugated
Form / Buffer	Liquid in 0.42% Potassium phosphate, 0.87% Sodium chloride, pH 7.3, 30% glycerol, and 0.01% sodium azide.		Storage at-20°C

**BACKGROUND**

Transcriptional corepressor. Acts as a dominant repressor towards other family members. Inhibits NF-kappa-B-regulated gene expression. May be required for the initiation and maintenance of the differentiated state. Essential for the transcriptional repressor activity of SIX3 during retina and lens development.

**APPLICATION**

To ensure optimal assay performance, AREX recommends conducting reagent titration tailored to each testing system for optimal detection results.

WB	1:500 - 1:1000
----	----------------

\*Results are sample-specific. Please refer to your local assay conditions and test parameters for reference.

**PRODUCT OVERVIEW**

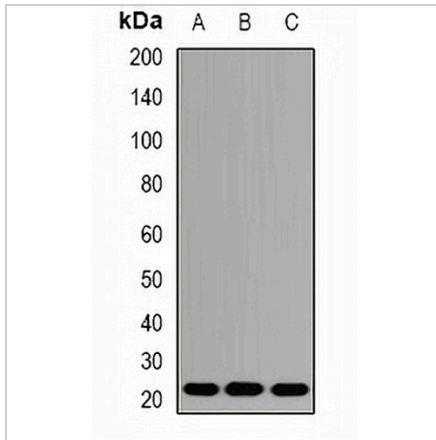
Description	Rabbit polyclonal antibody to AES
Specificity	Recognizes endogenous levels of AES protein.
Antibody Type	Primary antibody
Immunogen	Recombinant fusion protein of human AES
Purification	The antibody was purified by immunogen affinity chromatography.
Molecular Weight	Predicted: 21; Observed: 22 kD
Form/Buffer	Liquid in 0.42% Potassium phosphate, 0.87% Sodium chloride, pH 7.3, 30% glycerol, and 0.01% sodium azide.
Alternative Names	GRG; Amino-terminal enhancer of split; Amino enhancer of split; Gp130-associated protein GAM; Protein ESP1; Protein GRG
Gene Symbol	AES
Entrez Gene	166(Human); 14797(Mouse); 29466(Rat)
SwissProt	Q08117(Human); P63002(Mouse); P63003(Rat)

\*AREX continuously optimizes our products. Webpage content may not reflect the latest updates. For inquiries, please contact [info@arexbio.com](mailto:info@arexbio.com) or your local distributor.

\*Clone Number, Reactivity, Source/Host and Clonality can be found in the product name and Key Features section above.

**DATASHEET****AES Rabbit Polyclonal Antibody**

CAT. NO. APA13290

**DATA**

Western blot analysis of AES expression in A549 (A), HeLa (B), mouse liver (C) whole cell lysates. (Predicted band size: 21; 29 kD; Observed band size: 22 kD)

**STORAGE**

Store at 4°C short term. For long term storage, store at -20°C, avoiding freeze/thaw cycles.

**NOTE**

For Research Use Only. Not for diagnostic, therapeutics, prophylactic or in vivo use.