

**DATASHEET**

**LPAAT alpha Rabbit Polyclonal Antibody**

CAT. NO. APA13292

**KEY FEATURES**

Target	LPAAT alpha	Source / Host	Rabbit
Reactivity	Human, Mouse	Clonality	Polyclonal
Applications	WB	Conjugation	Unconjugated
Form / Buffer	Liquid in 0.42% Potassium phosphate, 0.87% Sodium chloride, pH 7.3, 30% glycerol, and 0.01% sodium azide.		Storage at-20°C

**BACKGROUND**

Converts 1-acyl-sn-glycerol-3-phosphate (lysophosphatidic acid or LPA) into 1,2-diacyl-sn-glycerol-3-phosphate (phosphatidic acid or PA) by incorporating an acyl moiety at the sn-2 position of the glycerol backbone.

**APPLICATION**

To ensure optimal assay performance, AREX recommends conducting reagent titration tailored to each testing system for optimal detection results.

WB	1:500 - 1:2000
----	----------------

\*Results are sample-specific. Please refer to your local assay conditions and test parameters for reference.

**PRODUCT OVERVIEW**

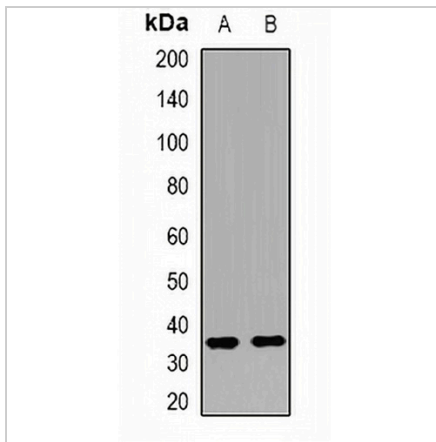
Description	Rabbit polyclonal antibody to LPAAT alpha
Specificity	Recognizes endogenous levels of LPAAT alpha protein.
Antibody Type	Primary antibody
Immunogen	Recombinant fusion protein of human LPAAT alpha
Purification	The antibody was purified by immunogen affinity chromatography.
Molecular Weight	Predicted: 31 kD; Observed: 32 kD
Form/Buffer	Liquid in 0.42% Potassium phosphate, 0.87% Sodium chloride, pH 7.3, 30% glycerol, and 0.01% sodium azide.
Alternative Names	G15; 1-acyl-sn-glycerol-3-phosphate acyltransferase alpha; 1-acylglycerol-3-phosphate O-acyltransferase 1; 1-AGP acyltransferase 1; 1-AGPAT 1; Lysophosphatidic acid acyltransferase alpha; LPAAT-alpha; Protein G15
Gene Symbol	AGPAT1
Entrez Gene	10554(Human)
SwissProt	Q99943(Human)

\*AREX continuously optimizes our products. Webpage content may not reflect the latest updates. For inquiries, please contact [info@arexbio.com](mailto:info@arexbio.com) or your local distributor.

\*Clone Number, Reactivity, Source/Host and Clonality can be found in the product name and Key Features section above.

**DATASHEET****LPAAT alpha Rabbit Polyclonal Antibody**

CAT. NO. APA13292

**DATA**

Western blot analysis of LPAAT alpha expression in mouse kidney (A), mouse brain (B) whole cell lysates. (Predicted band size: 31 kD; Observed band size: 32 kD)

**STORAGE**

Store at 4°C short term. For long term storage, store at -20°C, avoiding freeze/thaw cycles.

**NOTE**

For Research Use Only. Not for diagnostic, therapeutics, prophylactic or in vivo use.