

**DATASHEET**

**p43 Rabbit Polyclonal Antibody**

CAT. NO. APA13294

**KEY FEATURES**

Target	p43	Source / Host	Rabbit
Reactivity	Human, Mouse, Rat	Clonality	Polyclonal
Applications	WB, IHC	Conjugation	Unconjugated
Form / Buffer	Liquid in 0.42% Potassium phosphate, 0.87% Sodium chloride, pH 7.3, 30% glycerol, and 0.01% sodium azide.		Storage at -20°C

**BACKGROUND**

Non-catalytic component of the multisynthase complex. Stimulates the catalytic activity of cytoplasmic arginyl-tRNA synthase . Binds tRNA. Possesses inflammatory cytokine activity . Negatively regulates TGF-beta signaling through stabilization of SMURF2 by binding to SMURF2 and inhibiting its SMAD7-mediated degradation . Involved in glucose homeostasis through induction of glucagon secretion at low glucose levels . Promotes dermal fibroblast proliferation and wound repair . Regulates KDELR1-mediated retention of HSP90B1/gp96 in the endoplasmic reticulum . Plays a role in angiogenesis by inducing endothelial cell migration at low concentrations and endothelial cell apoptosis at high concentrations . Induces maturation of dendritic cells and monocyte cell adhesion .

**APPLICATION**

To ensure optimal assay performance, AREX recommends conducting reagent titration tailored to each testing system for optimal detection results.

WB	1:500 - 1:1000
IHC	1:50 - 1:200

\*Results are sample-specific. Please refer to your local assay conditions and test parameters for reference.

**PRODUCT OVERVIEW**

Description	Rabbit polyclonal antibody to p43
Specificity	Recognizes endogenous levels of p43 protein.
Antibody Type	Primary antibody
Immunogen	Recombinant fusion protein of human p43
Purification	The antibody was purified by immunogen affinity chromatography.
Molecular Weight	Predicted: 34; Observed: 37 kD
Form/Buffer	Liquid in 0.42% Potassium phosphate, 0.87% Sodium chloride, pH 7.3, 30% glycerol, and 0.01% sodium azide.
Alternative Names	EMAP2; SCYE1; Aminoacyl tRNA synthase complex-interacting multifunctional protein 1; Multisynthase complex auxiliary component p43
Gene Symbol	AIMP1
Entrez Gene	9255(Human)
SwissProt	Q12904(Human); P31230(Mouse)

\*AREX continuously optimizes our products. Webpage content may not reflect the latest updates. For inquiries, please contact [info@arexbio.com](mailto:info@arexbio.com) or your local distributor.

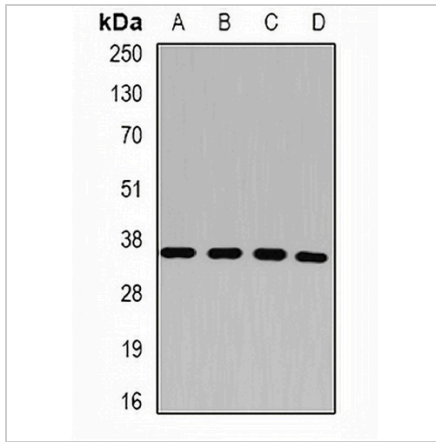
\*Clone Number, Reactivity, Source/Host and Clonality can be found in the product name and Key Features section above.

**DATASHEET**

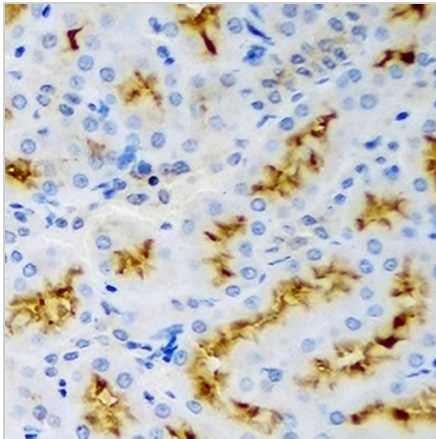
**p43 Rabbit Polyclonal Antibody**

CAT. NO. APA13294

**DATA**



Western blot analysis of p43 expression in HepG2 (A), HT29 (B), MCF7 (C), A549 (D) whole cell lysates. (Predicted band size: 34; 37 kD; Observed band size: 37 kD)



Immunohistochemical analysis of p43 staining in rat kidney formalin fixed paraffin embedded tissue section. The section was pre-treated using heat mediated antigen retrieval with sodium citrate buffer (pH 6.0). The section was then incubated with the antibody at room temperature and detected using an HRP conjugated compact polymer system. DAB was used as the chromogen. The section was then counterstained with haematoxylin and mounted with DPX.

**STORAGE**

Store at 4°C short term. For long term storage, store at -20°C, avoiding freeze/thaw cycles.

**NOTE**

For Research Use Only. Not for diagnostic, therapeutics, prophylactic or in vivo use.