

DATASHEET

ALKBH3 Rabbit Polyclonal Antibody

CAT. NO. APA13299

KEY FEATURES

Target	ALKBH3	Source / Host	Rabbit
Reactivity	Human, Mouse	Clonality	Polyclonal
Applications	WB	Conjugation	Unconjugated
Form / Buffer	Liquid in 0.42% Potassium phosphate, 0.87% Sodium chloride, pH 7.3, 30% glycerol, and 0.01% sodium azide.		Storage at -20°C

BACKGROUND

Dioxygenase that mediates demethylation of DNA and RNA containing 1-methyladenosine (m1A) . Repairs alkylated DNA containing 1-methyladenosine (m1A) and 3-methylcytosine (m3C) by oxidative demethylation . Has a strong preference for single-stranded DNA . Able to process alkylated m3C within double-stranded regions via its interaction with ASCC3, which promotes DNA unwinding to generate single-stranded substrate needed for ALKBH3 . Can repair exocyclic 3,N4-ethenocytosine adducts in single-stranded DNA . Also acts on RNA . Demethylates N(1)-methyladenosine (m1A) RNA, an epigenetic internal modification of messenger RNAs (mRNAs) highly enriched within 5'-untranslated regions (UTRs) and in the vicinity of start codons . Requires molecular oxygen, alpha-ketoglutarate and iron .

APPLICATION

To ensure optimal assay performance, AREX recommends conducting reagent titration tailored to each testing system for optimal detection results.

WB	1:500 - 1:2000
----	----------------

*Results are sample-specific. Please refer to your local assay conditions and test parameters for reference.

PRODUCT OVERVIEW

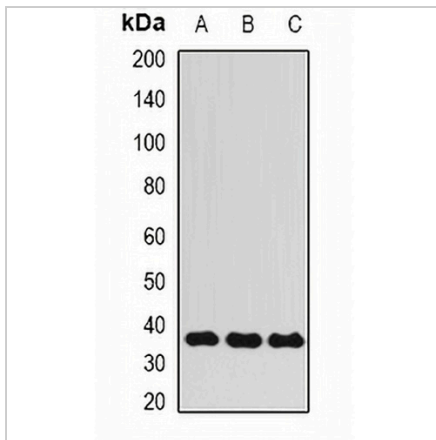
Description	Rabbit polyclonal antibody to ALKBH3
Specificity	Recognizes endogenous levels of ALKBH3 protein.
Antibody Type	Primary antibody
Immunogen	Recombinant fusion protein of human ALKBH3
Purification	The antibody was purified by immunogen affinity chromatography.
Molecular Weight	Predicted: 33 kD; Observed: 36 kD
Form/Buffer	Liquid in 0.42% Potassium phosphate, 0.87% Sodium chloride, pH 7.3, 30% glycerol, and 0.01% sodium azide.
Alternative Names	ABH3; DEPC1; Alpha-ketoglutarate-dependent dioxygenase alkB homolog 3; Alkylated DNA repair protein alkB homolog 3; DEPC-1; Prostate cancer antigen 1
Gene Symbol	ALKBH3
Entrez Gene	221120(Human); 69113(Mouse); 362169(Rat)
SwissProt	Q96Q83(Human); Q8K1E6(Mouse); Q5XIC8(Rat)

*AREX continuously optimizes our products. Webpage content may not reflect the latest updates. For inquiries, please contact info@arexbio.com or your local distributor.

*Clone Number, Reactivity, Source/Host and Clonality can be found in the product name and Key Features section above.

DATASHEET**ALKBH3 Rabbit Polyclonal Antibody**

CAT. NO. APA13299

DATA

Western blot analysis of ALKBH3 expression in HepG2 (A), HeLa (B), MCF7 (C) whole cell lysates. (Predicted band size: 33 kD; Observed band size: 36 kD)

STORAGE

Store at 4°C short term. For long term storage, store at -20°C, avoiding freeze/thaw cycles.

NOTE

For Research Use Only. Not for diagnostic, therapeutics, prophylactic or in vivo use.