

DATASHEET

AMBP Rabbit Polyclonal Antibody

CAT. NO. APA13303

KEY FEATURES

Target	AMBP	Source / Host	Rabbit
Reactivity	Human, Mouse, Rat	Clonality	Polyclonal
Applications	WB	Conjugation	Unconjugated
Form / Buffer	Liquid in 0.42% Potassium phosphate, 0.87% Sodium chloride, pH 7.3, 30% glycerol, and 0.01% sodium azide.		Storage at-20°C

BACKGROUND

Antioxidant and tissue repair protein with reductase, heme-binding and radical-scavenging activities. Removes and protects against harmful oxidants and repairs macromolecules in intravascular and extravascular spaces and in intracellular compartments. Intravascularly, plays a regulatory role in red cell homeostasis by preventing heme- and reactive oxygen species-induced cell damage. Binds and degrades free heme to protect fetal and adult red blood cells from hemolysis. Reduces extracellular methemoglobin, a Fe³⁺ (ferric) form of hemoglobin that cannot bind oxygen, back to the Fe²⁺ (ferrous) form deoxyhemoglobin, which has oxygen-carrying potential. Upon acute inflammation, inhibits oxidation of low-density lipoprotein particles by MPO and limits vascular damage.

APPLICATION

To ensure optimal assay performance, AREX recommends conducting reagent titration tailored to each testing system for optimal detection results.

WB	1:500 - 1:2000
----	----------------

*Results are sample-specific. Please refer to your local assay conditions and test parameters for reference.

PRODUCT OVERVIEW

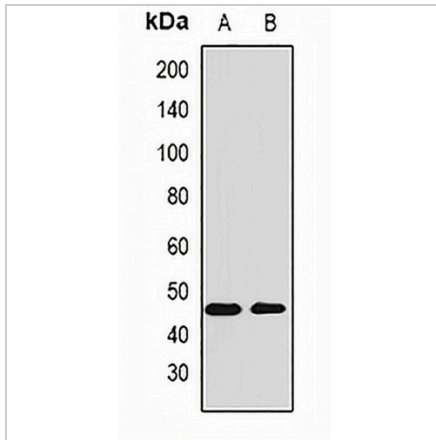
Description	Rabbit polyclonal antibody to AMBP
Specificity	Recognizes endogenous levels of AMBP protein.
Antibody Type	Primary antibody
Immunogen	Recombinant fusion protein of human AMBP
Purification	The antibody was purified by immunogen affinity chromatography.
Molecular Weight	Predicted: 38 kD; Observed: 46 kD
Form/Buffer	Liquid in 0.42% Potassium phosphate, 0.87% Sodium chloride, pH 7.3, 30% glycerol, and 0.01% sodium azide.
Alternative Names	HCP; ITIL; Protein AMBP
Gene Symbol	AMBP
Entrez Gene	259(Human); 11699(Mouse); 25377(Rat)
SwissProt	P02760(Human); Q07456(Mouse); Q64240(Rat)

*AREX continuously optimizes our products. Webpage content may not reflect the latest updates. For inquiries, please contact info@arexbio.com or your local distributor.

*Clone Number, Reactivity, Source/Host and Clonality can be found in the product name and Key Features section above.

DATASHEET**AMBP Rabbit Polyclonal Antibody**

CAT. NO. APA13303

DATA

Western blot analysis of AMBP expression in CEM (A), U251 (B) whole cell lysates.
(Predicted band size: 38 kD; Observed band size: 46 kD)

STORAGE

Store at 4°C short term. For long term storage, store at -20°C, avoiding freeze/thaw cycles.

NOTE

For Research Use Only. Not for diagnostic, therapeutics, prophylactic or in vivo use.