

DATASHEET

ATR Rabbit Polyclonal Antibody

CAT. NO. APA13306

KEY FEATURES

Target	ATR	Source / Host	Rabbit
Reactivity	Human, Mouse, Rat	Clonality	Polyclonal
Applications	WB, IF/ICC	Conjugation	Unconjugated
Form / Buffer	Liquid in 0.42% Potassium phosphate, 0.87% Sodium chloride, pH 7.3, 30% glycerol, and 0.01% sodium azide.		Storage at -20°C

BACKGROUND

Plays a role in cell attachment and migration. Interacts with extracellular matrix proteins and with the actin cytoskeleton and thereby plays an important role in normal extracellular matrix (ECM) homeostasis. Mediates adhesion of cells to type 1 collagen and gelatin, reorganization of the actin cytoskeleton and promotes cell spreading. Plays a role in the angiogenic response of cultured umbilical vein endothelial cells. May also act as a receptor for PLAU. Upon ligand binding, stimulates the phosphorylation of EGFR and ERK1/2 homeostasis. Mediates adhesion of cells to type 1 collagen and gelatin, reorganization of the actin cytoskeleton and promotes cell spreading. Plays a role in the angiogenic response of cultured umbilical vein endothelial cells. May also act as a receptor for PLAU.

APPLICATION

To ensure optimal assay performance, AREX recommends conducting reagent titration tailored to each testing system for optimal detection results.

WB	1:500 - 1:2000
IF/ICC	1:50 - 1:100

*Results are sample-specific. Please refer to your local assay conditions and test parameters for reference.

PRODUCT OVERVIEW

Description	Rabbit polyclonal antibody to ATR
Specificity	Recognizes endogenous levels of ATR protein.
Antibody Type	Primary antibody
Immunogen	Recombinant fusion protein of human ATR
Purification	The antibody was purified by immunogen affinity chromatography.
Molecular Weight	Predicted: 62 kD; Observed: 78 kD
Form/Buffer	Liquid in 0.42% Potassium phosphate, 0.87% Sodium chloride, pH 7.3, 30% glycerol, and 0.01% sodium azide.
Alternative Names	ATR; TEM8; Anthrax toxin receptor 1; Tumor endothelial marker 8
Gene Symbol	ANTXR1
Entrez Gene	84168(Human); 69538(Mouse); 362393(Rat)
SwissProt	Q9H6X2(Human); Q9CZ52(Mouse); Q0PMD2(Rat)

*AREX continuously optimizes our products. Webpage content may not reflect the latest updates. For inquiries, please contact info@arexbio.com or your local distributor.

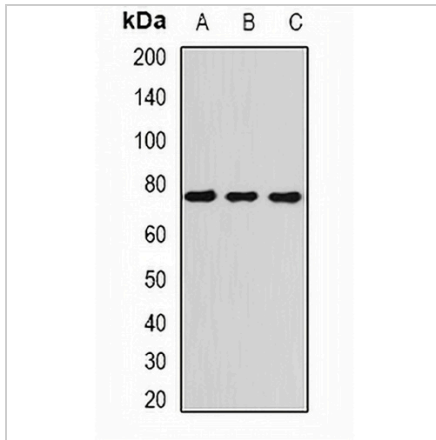
*Clone Number, Reactivity, Source/Host and Clonality can be found in the product name and Key Features section above.

DATASHEET

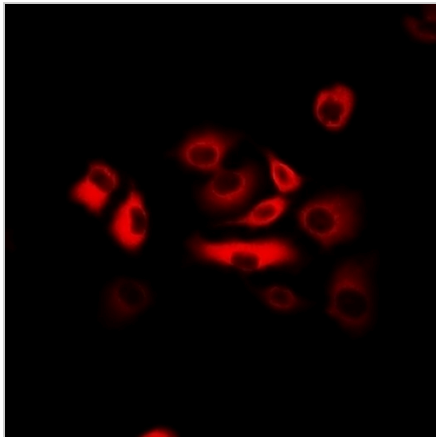
ATR Rabbit Polyclonal Antibody

CAT. NO. APA13306

DATA



Western blot analysis of ATR expression in H460 (A), HeLa (B), mouse spleen (C) whole cell lysates. (Predicted band size: 62 kD; Observed band size: 78 kD)



Immunofluorescent analysis of ATR staining in HeLa cells. Formalin-fixed cells were permeabilized with 0.1% Triton X-100 in TBS for 5-10 minutes and blocked with 3% BSA-PBS for 30 minutes at room temperature. Cells were probed with the primary antibody in 3% BSA-PBS and incubated overnight at 4 °C in a humidified chamber. Cells were washed with PBST and incubated with a DyLight 594-conjugated secondary antibody (red) in PBS at room temperature in the dark.

STORAGE

Store at 4°C short term. For long term storage, store at -20°C, avoiding freeze/thaw cycles.

NOTE

For Research Use Only. Not for diagnostic, therapeutics, prophylactic or in vivo use.