

DATASHEET

Apolipoprotein M Rabbit Polyclonal Antibody

CAT. NO. APA13313

KEY FEATURES

| | | | |
|---------------|---|---------------|---------------------|
| Target | Apolipoprotein M | Source / Host | Rabbit |
| Reactivity | Human, Mouse, Rat | Clonality | Polyclonal |
| Applications | WB, IHC, IF/ICC | Conjugation | Unconjugated |
| Form / Buffer | Liquid in 0.42% Potassium phosphate, 0.87% Sodium chloride, pH 7.3, 30% glycerol, and 0.01% sodium azide. | | Storage at -20°C |

BACKGROUND

Probably involved in lipid transport. Can bind sphingosine-1-phosphate, myristic acid, palmitic acid and stearic acid, retinol, all-trans-retinoic acid and 9-cis-retinoic acid.

APPLICATION

To ensure optimal assay performance, AREX recommends conducting reagent titration tailored to each testing system for optimal detection results.

| | |
|--------|----------------|
| WB | 1:500 - 1:2000 |
| IHC | 1:50 - 1:200 |
| IF/ICC | 1:50 - 1:200 |

*Results are sample-specific. Please refer to your local assay conditions and test parameters for reference.

PRODUCT OVERVIEW

| | |
|-------------------|---|
| Description | Rabbit polyclonal antibody to Apolipoprotein M |
| Specificity | Recognizes endogenous levels of Apolipoprotein M protein. |
| Antibody Type | Primary antibody |
| Immunogen | Recombinant fusion protein of human Apolipoprotein M |
| Purification | The antibody was purified by immunogen affinity chromatography. |
| Molecular Weight | Predicted: 13; Observed: 21 kD |
| Form/Buffer | Liquid in 0.42% Potassium phosphate, 0.87% Sodium chloride, pH 7.3, 30% glycerol, and 0.01% sodium azide. |
| Alternative Names | G3A; NG20; Apolipoprotein M; Apo-M; ApoM; Protein G3a |
| Gene Symbol | APOM |
| Entrez Gene | 55937(Human); 55938(Mouse); 55939(Rat) |
| SwissProt | O95445(Human); Q9Z1R3(Mouse); P14630(Rat) |

*AREX continuously optimizes our products. Webpage content may not reflect the latest updates. For inquiries, please contact info@arexbio.com or your local distributor.

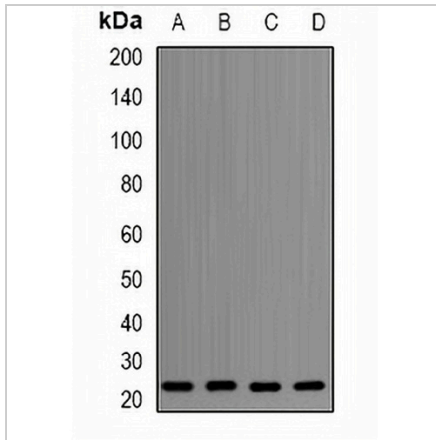
*Clone Number, Reactivity, Source/Host and Clonality can be found in the product name and Key Features section above.

DATASHEET

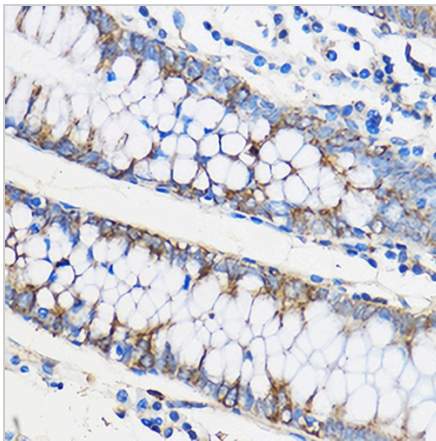
Apolipoprotein M Rabbit Polyclonal Antibody

CAT. NO. APA13313

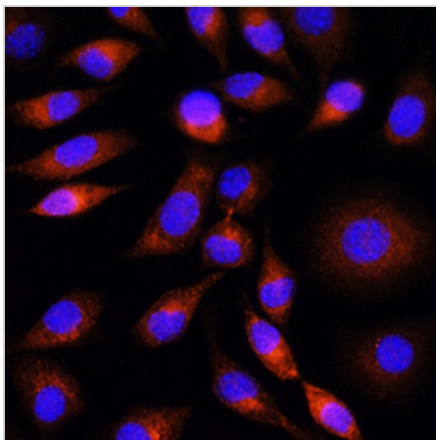
DATA



Western blot analysis of Apolipoprotein M expression in A549 (A), PC3 (B), mouse liver (C), mouse kidney (D) whole cell lysates. (Predicted band size: 13; 21 kD; Observed band size: 21 kD)



Immunohistochemical analysis of Apolipoprotein M staining in human colon formalin fixed paraffin embedded tissue section. The section was pre-treated using heat mediated antigen retrieval with sodium citrate buffer (pH 6.0). The section was then incubated with the antibody at room temperature and detected using an HRP conjugated compact polymer system. DAB was used as the chromogen. The section was then counterstained with haematoxylin and mounted with DPX.



Immunofluorescent analysis of Apolipoprotein M staining in L929 cells. Formalin-fixed cells were permeabilized with 0.1% Triton X-100 in TBS for 5-10 minutes and blocked with 3% BSA-PBS for 30 minutes at room temperature. Cells were probed with the primary antibody in 3% BSA-PBS and incubated overnight at 4 °C in a humidified chamber. Cells were washed with PBST and incubated with a AREX® Fluor 594-conjugated secondary antibody (red) in PBS at room temperature in the dark. DAPI was used to stain the cell nuclei (blue).

STORAGE

Store at 4°C short term. For long term storage, store at -20°C, avoiding freeze/thaw cycles.

NOTE

For Research Use Only. Not for diagnostic, therapeutics, prophylactic or in vivo use.