

**DATASHEET**

**Amphiregulin Rabbit Polyclonal Antibody**

CAT. NO. APA13315

**KEY FEATURES**

Target	Amphiregulin	Source / Host	Rabbit
Reactivity	Human, Mouse, Rat	Clonality	Polyclonal
Applications	WB	Conjugation	Unconjugated
Form / Buffer	Liquid in 0.42% Potassium phosphate, 0.87% Sodium chloride, pH 7.3, 30% glycerol, and 0.01% sodium azide.		Storage at -20°C

**BACKGROUND**

Ligand of the EGF receptor/EGFR. Autocrine growth factor as well as a mitogen for a broad range of target cells including astrocytes, Schwann cells and fibroblasts.

**APPLICATION**

To ensure optimal assay performance, AREX recommends conducting reagent titration tailored to each testing system for optimal detection results.

WB	1:500 - 1:2000
----	----------------

\*Results are sample-specific. Please refer to your local assay conditions and test parameters for reference.

**PRODUCT OVERVIEW**

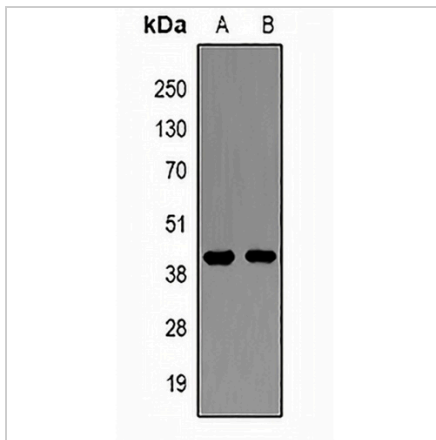
Description	Rabbit polyclonal antibody to Amphiregulin
Specificity	Recognizes endogenous levels of Amphiregulin protein.
Antibody Type	Primary antibody
Immunogen	Recombinant fusion protein of human Amphiregulin
Purification	The antibody was purified by immunogen affinity chromatography.
Molecular Weight	Predicted: 27 kD; Observed: 43 kD
Form/Buffer	Liquid in 0.42% Potassium phosphate, 0.87% Sodium chloride, pH 7.3, 30% glycerol, and 0.01% sodium azide.
Alternative Names	SDGF; Amphiregulin; AR; Colorectum cell-derived growth factor; CRDGF
Gene Symbol	AREG; AREGB
Entrez Gene	374(Human); 11839(Mouse)
SwissProt	P15514(Human); P31955(Mouse)

\*AREX continuously optimizes our products. Webpage content may not reflect the latest updates. For inquiries, please contact [info@arexbio.com](mailto:info@arexbio.com) or your local distributor.

\*Clone Number, Reactivity, Source/Host and Clonality can be found in the product name and Key Features section above.

**DATASHEET****Amphiregulin Rabbit Polyclonal Antibody**

CAT. NO. APA13315

**DATA**

Western blot analysis of Amphiregulin expression in A549 (A), HT29 (B) whole cell lysates. (Predicted band size: 27 kD; Observed band size: 43 kD)

**STORAGE**

Store at 4°C short term. For long term storage, store at -20°C, avoiding freeze/thaw cycles.

**NOTE**

For Research Use Only. Not for diagnostic, therapeutics, prophylactic or in vivo use.