

DATASHEET

ARHGAP25 Rabbit Polyclonal Antibody

CAT. NO. APA13317

KEY FEATURES

Target	ARHGAP25	Source / Host	Rabbit
Reactivity	Human, Mouse	Clonality	Polyclonal
Applications	WB, IHC, IF/ICC	Conjugation	Unconjugated
Form / Buffer	Liquid in 0.42% Potassium phosphate, 0.87% Sodium chloride, pH 7.3, 30% glycerol, and 0.01% sodium azide.		Storage at -20°C

BACKGROUND

GTPase activator for the Rho-type GTPases by converting them to an inactive GDP-bound state.

APPLICATION

To ensure optimal assay performance, AREX recommends conducting reagent titration tailored to each testing system for optimal detection results.

WB	1:500 - 1:2000
IHC	1:50 - 1:200
IF/ICC	1:50 - 1:200

*Results are sample-specific. Please refer to your local assay conditions and test parameters for reference.

PRODUCT OVERVIEW

Description	Rabbit polyclonal antibody to ARHGAP25
Specificity	Recognizes endogenous levels of ARHGAP25 protein.
Antibody Type	Primary antibody
Immunogen	Recombinant fusion protein of human ARHGAP25
Purification	The antibody was purified by immunogen affinity chromatography.
Molecular Weight	Predicted: 51; Observed: 70 kD
Form/Buffer	Liquid in 0.42% Potassium phosphate, 0.87% Sodium chloride, pH 7.3, 30% glycerol, and 0.01% sodium azide.
Alternative Names	KIAA0053; Rho GTPase-activating protein 25; Rho-type GTPase-activating protein 25
Gene Symbol	ARHGAP25
Entrez Gene	9938(Human); 232201(Mouse)
SwissProt	P42331(Human); Q8BYW1(Mouse)

*AREX continuously optimizes our products. Webpage content may not reflect the latest updates. For inquiries, please contact info@arexbio.com or your local distributor.

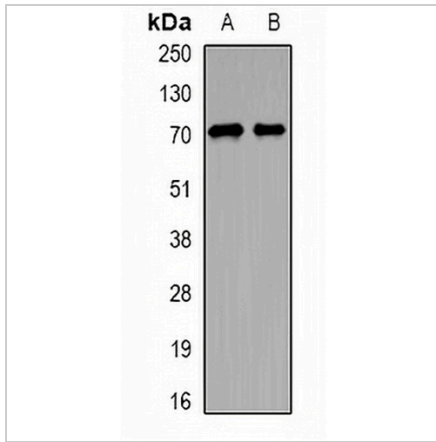
*Clone Number, Reactivity, Source/Host and Clonality can be found in the product name and Key Features section above.

DATASHEET

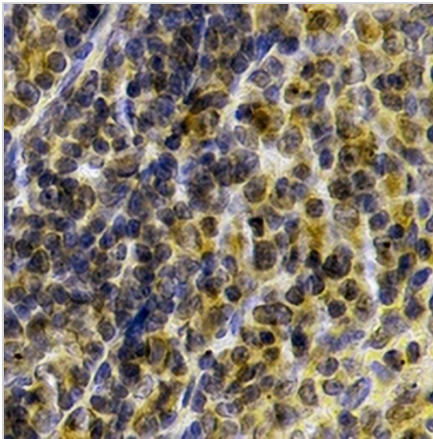
ARHGAP25 Rabbit Polyclonal Antibody

CAT. NO. APA13317

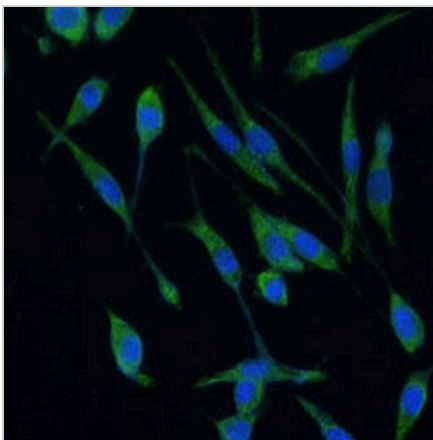
DATA



Western blot analysis of ARHGAP25 expression in OVCAR3 (A), COS7 (B) whole cell lysates. (Predicted band size: 51; 69; 72; 73 kD; Observed band size: 70 kD)



Immunohistochemical analysis of ARHGAP25 staining in human spleen formalin fixed paraffin embedded tissue section. The section was pre-treated using heat mediated antigen retrieval with sodium citrate buffer (pH 6.0). The section was then incubated with the antibody at room temperature and detected using an HRP conjugated compact polymer system. DAB was used as the chromogen. The section was then counterstained with haematoxylin and mounted with DPX.



Immunofluorescent analysis of ARHGAP25 staining in L929 cells. Formalin-fixed cells were permeabilized with 0.1% Triton X-100 in TBS for 5-10 minutes and blocked with 3% BSA-PBS for 30 minutes at room temperature. Cells were probed with the primary antibody in 3% BSA-PBS and incubated overnight at 4 °C in a humidified chamber. Cells were washed with PBST and incubated with a AREX® Fluor 488 -conjugated secondary antibody (green) in PBS at room temperature in the dark. DAPI was used to stain the cell nuclei (blue).

STORAGE

Store at 4°C short term. For long term storage, store at -20°C, avoiding freeze/thaw cycles.

NOTE

For Research Use Only. Not for diagnostic, therapeutics, prophylactic or in vivo use.