

**DATASHEET**

**Beta 2 Microglobulin Rabbit Polyclonal Antibody**

CAT. NO. APA13326

**KEY FEATURES**

|               |   |               |              |
|---------------|---|---------------|--------------|
| Target        | Beta 2 Microglobulin  | Source / Host | Rabbit       |
| Reactivity    | Human, Mouse, Rat   | Clonality     | Polyclonal   |
| Applications  | WB  | Conjugation   | Unconjugated |
| Form / Buffer | Liquid in 0.42% Potassium phosphate, 0.87% Sodium chloride, pH 7.3, 30% glycerol, and 0.01% sodium azide. | Storage       | at-20°C      |

**BACKGROUND**

Component of the class I major histocompatibility complex (MHC). Involved in the presentation of peptide antigens to the immune system. Exogenously applied M.tuberculosis EsxA or EsxA-EsxB (or EsxA expressed in host) binds B2M and decreases its export to the cell surface (total protein levels do not change), probably leading to defects in class I antigen presentation . Involved in the presentation of peptide antigens to the immune system. Exogenously applied M.tuberculosis EsxA or EsxA-EsxB (or EsxA expressed in host) binds B2M and decreases its export to the cell surface (total protein levels do not change), probably leading to defects in class I antigen presentation .

**APPLICATION**

To ensure optimal assay performance, AREX recommends conducting reagent titration tailored to each testing system for optimal detection results.

|    |                |
|----|----------------|
| WB | 1:500 - 1:1000 |
|----|----------------|

\*Results are sample-specific. Please refer to your local assay conditions and test parameters for reference.

**PRODUCT OVERVIEW**

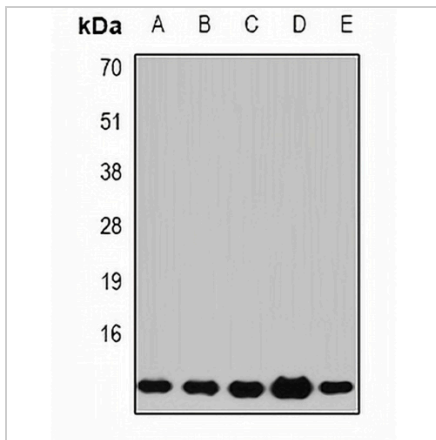
|                   |   |
|-------------------|---|
| Description       | Rabbit polyclonal antibody to Beta 2 Microglobulin  |
| Specificity       | Recognizes endogenous levels of Beta 2 Microglobulin protein.   |
| Antibody Type     | Primary antibody  |
| Immunogen         | Recombinant fusion protein of human Beta 2 Microglobulin  |
| Purification      | The antibody was purified by immunogen affinity chromatography.   |
| Molecular Weight  | Predicted: 13 kD; Observed: 12 kD   |
| Form/Buffer       | Liquid in 0.42% Potassium phosphate, 0.87% Sodium chloride, pH 7.3, 30% glycerol, and 0.01% sodium azide. |
| Alternative Names | Beta-2-microglobulin  |
| Gene Symbol       | B2M   |
| Entrez Gene       | 567(Human); 12010(Mouse)  |
| SwissProt         | P61769(Human); P01887(Mouse)  |

\*AREX continuously optimizes our products. Webpage content may not reflect the latest updates. For inquiries, please contact [info@arexbio.com](mailto:info@arexbio.com) or your local distributor.

\*Clone Number, Reactivity, Source/Host and Clonality can be found in the product name and Key Features section above.

**DATASHEET****Beta 2 Microglobulin Rabbit Polyclonal Antibody**

CAT. NO. APA13326

**DATA**

Western blot analysis of Beta 2 Microglobulin expression in Jurkat (A), COS7 (B), K562 (C), mouse lung (D), mouse liver (E) whole cell lysates. (Predicted band size: 13 kD; Observed band size: 12 kD)

**STORAGE**

Store at 4°C short term. For long term storage, store at -20°C, avoiding freeze/thaw cycles.

**NOTE**

For Research Use Only. Not for diagnostic, therapeutics, prophylactic or in vivo use.