

**DATASHEET**

**Complement C5 Rabbit Polyclonal Antibody**

CAT. NO. APA13342

**KEY FEATURES**

Target	Complement C5	Source / Host	Rabbit
Reactivity	Human	Clonality	Polyclonal
Applications	WB, IHC	Conjugation	Unconjugated
Form / Buffer	Liquid in 0.42% Potassium phosphate, 0.87% Sodium chloride, pH 7.3, 30% glycerol, and 0.01% sodium azide.		Storage at -20°C

**BACKGROUND**

Precursor of the C5a anaphylatoxin and complement C5b components of the complement pathways, which consist in a cascade of proteins that leads to phagocytosis and breakdown of pathogens and signaling that strengthens the adaptive immune system. Activated downstream of classical, alternative, lectin and GZMK complement pathways.

**APPLICATION**

To ensure optimal assay performance, AREX recommends conducting reagent titration tailored to each testing system for optimal detection results.

WB	1:500 - 1:2000
IHC	1:50 - 1:100

\*Results are sample-specific. Please refer to your local assay conditions and test parameters for reference.

**PRODUCT OVERVIEW**

Description	Rabbit polyclonal antibody to Complement C5
Specificity	Recognizes endogenous levels of Complement C5 protein.
Antibody Type	Primary antibody
Immunogen	Recombinant fusion protein of human Complement C5
Purification	The antibody was purified by immunogen affinity chromatography.
Molecular Weight	Predicted: 188 kD; Observed: 74; 110 kD
Form/Buffer	Liquid in 0.42% Potassium phosphate, 0.87% Sodium chloride, pH 7.3, 30% glycerol, and 0.01% sodium azide.
Alternative Names	CPAMD4; Complement C5; C3 and PZP-like alpha-2-macroglobulin domain-containing protein 4
Gene Symbol	C5
Entrez Gene	727(Human)
SwissProt	P01031(Human)

\*AREX continuously optimizes our products. Webpage content may not reflect the latest updates. For inquiries, please contact [info@arexbio.com](mailto:info@arexbio.com) or your local distributor.

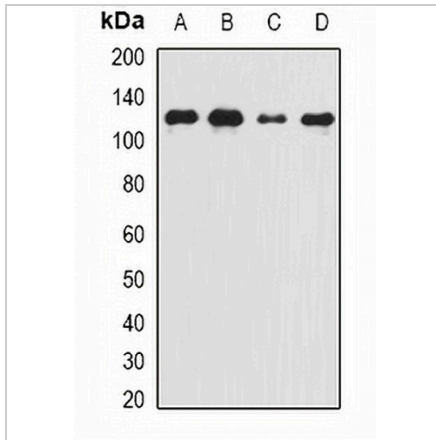
\*Clone Number, Reactivity, Source/Host and Clonality can be found in the product name and Key Features section above.

**DATASHEET**

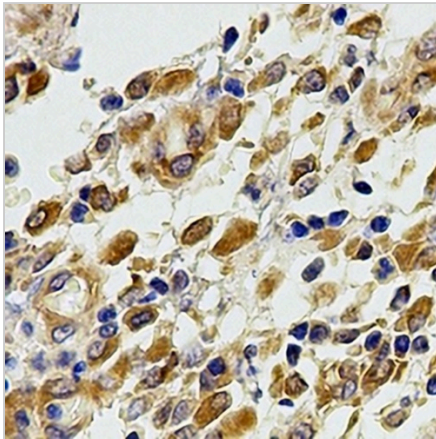
**Complement C5 Rabbit Polyclonal Antibody**

CAT. NO. APA13342

**DATA**



Western blot analysis of Complement C5 expression in Raji (A), Jurkat (B), mouse heart (C), rat liver (D) whole cell lysates. (Predicted band size: 188 kD; Observed band size: 74; 110 kD)



Immunohistochemical analysis of Complement C5 staining in human stomach formalin fixed paraffin embedded tissue section. The section was pre-treated using heat mediated antigen retrieval with sodium citrate buffer (pH 6.0). The section was then incubated with the antibody at room temperature and detected using an HRP conjugated compact polymer system. DAB was used as the chromogen. The section was then counterstained with haematoxylin and mounted with DPX.

**STORAGE**

Store at 4°C short term. For long term storage, store at -20°C, avoiding freeze/thaw cycles.

**NOTE**

For Research Use Only. Not for diagnostic, therapeutics, prophylactic or in vivo use.