

DATASHEET

CBLB Rabbit Polyclonal Antibody

CAT. NO. APA13346

KEY FEATURES

Target	CBLB	Source / Host	Rabbit
Reactivity	Human, Mouse, Rat	Clonality	Polyclonal
Applications	WB, IHC	Conjugation	Unconjugated
Form / Buffer	Liquid in 0.42% Potassium phosphate, 0.87% Sodium chloride, pH 7.3, 30% glycerol, and 0.01% sodium azide.		Storage at -20°C

BACKGROUND

E3 ubiquitin-protein ligase which accepts ubiquitin from specific E2 ubiquitin-conjugating enzymes, and transfers it to substrates, generally promoting their degradation by the proteasome . Negatively regulates TCR (T-cell receptor), BCR (B-cell receptor) and FCER1 (high affinity immunoglobulin epsilon receptor) signal transduction pathways . In naive T-cells, inhibits VAV1 activation upon TCR engagement and imposes a requirement for CD28 costimulation for proliferation and IL-2 production . Also acts by promoting PIK3R1/p85 ubiquitination, which impairs its recruitment to the TCR and subsequent activation . In activated T-cells, inhibits PLCG1 activation and calcium mobilization upon restimulation and promotes energy .

APPLICATION

To ensure optimal assay performance, AREX recommends conducting reagent titration tailored to each testing system for optimal detection results.

WB	1:500 - 1:1000
IHC	1:50 - 1:200

*Results are sample-specific. Please refer to your local assay conditions and test parameters for reference.

PRODUCT OVERVIEW

Description	Rabbit polyclonal antibody to CBLB
Specificity	Recognizes endogenous levels of CBLB protein.
Antibody Type	Primary antibody
Immunogen	Recombinant fusion protein of human CBLB
Purification	The antibody was purified by immunogen affinity chromatography.
Molecular Weight	Predicted: 86; Observed: 109 kD
Form/Buffer	Liquid in 0.42% Potassium phosphate, 0.87% Sodium chloride, pH 7.3, 30% glycerol, and 0.01% sodium azide.
Alternative Names	RNF56; E3 ubiquitin-protein ligase CBL-B; Casitas B-lineage lymphoma proto-oncogene b; RING finger protein 56; SH3-binding protein CBL-B; Signal transduction protein CBL-B
Gene Symbol	CBLB
Entrez Gene	868(Human); 208650(Mouse); 171136(Rat)
SwissProt	Q13191(Human); Q3TTA7(Mouse); Q8K4S7(Rat)

*AREX continuously optimizes our products. Webpage content may not reflect the latest updates. For inquiries, please contact info@arexbio.com or your local distributor.

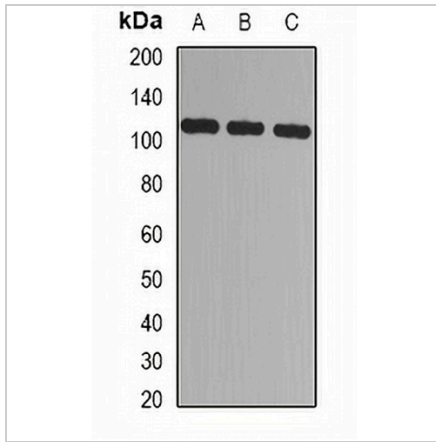
*Clone Number, Reactivity, Source/Host and Clonality can be found in the product name and Key Features section above.

DATASHEET

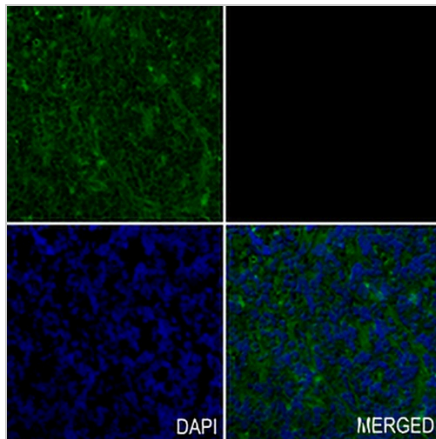
CBLB Rabbit Polyclonal Antibody

CAT. NO. APA13346

DATA



Western blot analysis of CBLB expression in Jurkat (A), 293T (B), mouse spleen (C) whole cell lysates. (Predicted band size: 86; 90; 109 kD; Observed band size: 109 kD)



Immunohistochemical analysis of CBLB staining in human tonsil formalin fixed paraffin embedded tissue section. The section was pre-treated using heat mediated antigen retrieval with sodium citrate buffer (pH 6.0). The section was then incubated with the antibody at room temperature and detected using an HRP conjugated compact polymer system. Tyramide-AREX® Fluor 488 (green) was used as the chromogen. The section was then counterstained with DAPI (blue).

STORAGE

Store at 4°C short term. For long term storage, store at -20°C, avoiding freeze/thaw cycles.

NOTE

For Research Use Only. Not for diagnostic, therapeutics, prophylactic or in vivo use.