

DATASHEET

CCL28 Rabbit Polyclonal Antibody

CAT. NO. APA13349

KEY FEATURES

Target	CCL28	Source / Host	Rabbit
Reactivity	Human, Mouse	Clonality	Polyclonal
Applications	WB	Conjugation	Unconjugated
Form / Buffer	Liquid in 0.42% Potassium phosphate, 0.87% Sodium chloride, pH 7.3, 30% glycerol, and 0.01% sodium azide.		Storage at -20°C

BACKGROUND

Chemotactic activity for resting CD4, CD8 T-cells and eosinophils. Binds to CCR3 and CCR10 and induces calcium mobilization in a dose-dependent manner.

APPLICATION

To ensure optimal assay performance, AREX recommends conducting reagent titration tailored to each testing system for optimal detection results.

WB	1:500 - 1:2000
----	----------------

*Results are sample-specific. Please refer to your local assay conditions and test parameters for reference.

PRODUCT OVERVIEW

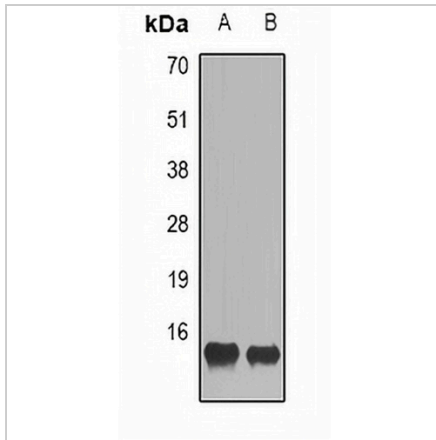
Description	Rabbit polyclonal antibody to CCL28
Specificity	Recognizes endogenous levels of CCL28 protein.
Antibody Type	Primary antibody
Immunogen	Recombinant fusion protein of human CCL28
Purification	The antibody was purified by immunogen affinity chromatography.
Molecular Weight	Predicted: 12; Observed: 14 kD
Form/Buffer	Liquid in 0.42% Potassium phosphate, 0.87% Sodium chloride, pH 7.3, 30% glycerol, and 0.01% sodium azide.
Alternative Names	SCYA28; C-C motif chemokine 28; Mucosae-associated epithelial chemokine; MEC; Protein CCK1; Small-inducible cytokine A28
Gene Symbol	CCL28
Entrez Gene	56477(Human); 56838(Mouse)
SwissProt	Q9NRJ3(Human); Q9JIL2(Mouse)

*AREX continuously optimizes our products. Webpage content may not reflect the latest updates. For inquiries, please contact info@arexbio.com or your local distributor.

*Clone Number, Reactivity, Source/Host and Clonality can be found in the product name and Key Features section above.

DATASHEET**CCL28 Rabbit Polyclonal Antibody**

CAT. NO. APA13349

DATA

Western blot analysis of CCL28 expression in Jurkat (A), HT29 (B) whole cell lysates.
(Predicted band size: 12; 14 kD; Observed band size: 14 kD)

STORAGE

Store at 4°C short term. For long term storage, store at -20°C, avoiding freeze/thaw cycles.

NOTE

For Research Use Only. Not for diagnostic, therapeutics, prophylactic or in vivo use.