

DATASHEET

CCR8 Rabbit Polyclonal Antibody

CAT. NO. APA13353

KEY FEATURES

Target	CCR8	Source / Host	Rabbit
Reactivity	Human, Mouse, Rat	Clonality	Polyclonal
Applications	WB	Conjugation	Unconjugated
Form / Buffer	Liquid in 0.42% Potassium phosphate, 0.87% Sodium chloride, pH 7.3, 30% glycerol, and 0.01% sodium azide.		Storage at-20°C

BACKGROUND

G protein-coupled receptor that can bind a variety of chemokines, such as CCL1, CCL8, CCL16, CCL18 . Regulates monocyte and eosinophil chemotaxis. Undergoes internalization upon CCL18 binding, leading to induced migration and calcium flux of highly polarized Th2 cells . In microglial cells, promotes phagocytosis with CCL18 through NF-kappa-B and Src signaling pathways . Stimulation of the CCL1-CCR8 signaling axis protects the gut from acute intestinal damage .

APPLICATION

To ensure optimal assay performance, AREX recommends conducting reagent titration tailored to each testing system for optimal detection results.

WB	1:500 - 1:2000
----	----------------

*Results are sample-specific. Please refer to your local assay conditions and test parameters for reference.

PRODUCT OVERVIEW

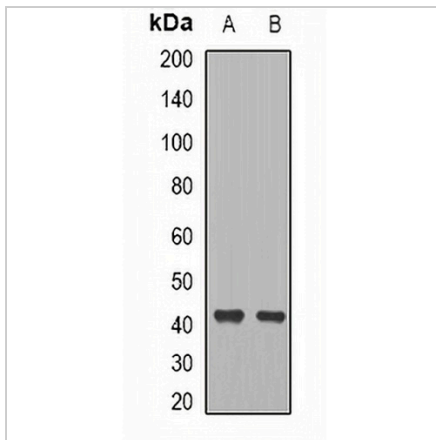
Description	Rabbit polyclonal antibody to CCR8
Specificity	Recognizes endogenous levels of CCR8 protein.
Antibody Type	Primary antibody
Immunogen	Recombinant fusion protein of human CCR8
Purification	The antibody was purified by immunogen affinity chromatography.
Molecular Weight	Predicted: 31; Observed: 41 kD
Form/Buffer	Liquid in 0.42% Potassium phosphate, 0.87% Sodium chloride, pH 7.3, 30% glycerol, and 0.01% sodium azide.
Alternative Names	CKRL1; CMKBR8; CMKBRL2; C-C chemokine receptor type 8; C-C CKR-8; CC-CKR-8; CCR-8; CC chemokine receptor CHEMR1; CMKBRL2; Chemokine receptor-like 1; CKR-L1; GPR-CY6; GPRCY6; TER1; CDw198
Gene Symbol	CCR8
Entrez Gene	1237(Human); 12776(Mouse)
SwissProt	P51685(Human); P56484(Mouse)

*AREX continuously optimizes our products. Webpage content may not reflect the latest updates. For inquiries, please contact info@arexbio.com or your local distributor.

*Clone Number, Reactivity, Source/Host and Clonality can be found in the product name and Key Features section above.

DATASHEET**CCR8 Rabbit Polyclonal Antibody**

CAT. NO. APA13353

DATA

Western blot analysis of CCR8 expression in mouse brain (A), rat brain (B) whole cell lysates. (Predicted band size: 31; 40 kD; Observed band size: 41 kD)

STORAGE

Store at 4°C short term. For long term storage, store at -20°C, avoiding freeze/thaw cycles.

NOTE

For Research Use Only. Not for diagnostic, therapeutics, prophylactic or in vivo use.