

DATASHEET

CD151 Rabbit Polyclonal Antibody

CAT. NO. APA13356

KEY FEATURES

Target	CD151	Source / Host	Rabbit
Reactivity	Human, Mouse, Rat	Clonality	Polyclonal
Applications	WB, IHC	Conjugation	Unconjugated
Form / Buffer	Liquid in 0.42% Potassium phosphate, 0.87% Sodium chloride, pH 7.3, 30% glycerol, and 0.01% sodium azide.		Storage at -20°C

BACKGROUND

Structural component of specialized membrane microdomains known as tetraspanin-enriched microdomains (TERMs), which act as platforms for receptor clustering and signaling. Plays a role in various cellular and molecular mechanism through its association with both integrin and non-integrin proteins. These interactions facilitate critical cellular functions, including cell-to-cell communication, wound healing, platelet aggregation, trafficking, cell motility, and angiogenesis, which act as platforms for receptor clustering and signaling. Plays a role in various cellular and molecular mechanism through its association with both integrin and non-integrin proteins.

APPLICATION

To ensure optimal assay performance, AREX recommends conducting reagent titration tailored to each testing system for optimal detection results.

WB	1:500 - 1:2000
IHC	1:50 - 1:200

*Results are sample-specific. Please refer to your local assay conditions and test parameters for reference.

PRODUCT OVERVIEW

Description	Rabbit polyclonal antibody to CD151
Specificity	Recognizes endogenous levels of CD151 protein.
Antibody Type	Primary antibody
Immunogen	Recombinant fusion protein of human CD151
Purification	The antibody was purified by immunogen affinity chromatography.
Molecular Weight	Predicted: 28 kD; Observed: 28 kD
Form/Buffer	Liquid in 0.42% Potassium phosphate, 0.87% Sodium chloride, pH 7.3, 30% glycerol, and 0.01% sodium azide.
Alternative Names	TSPAN24; CD151 antigen; GP27; Membrane glycoprotein SFA-1; Platelet-endothelial tetraspan antigen 3; PETA-3; Tetraspanin-24; Tspan-24; CD151
Gene Symbol	CD151
Entrez Gene	977(Human); 12476(Mouse); 100911730; 64315(Rat)
SwissProt	P48509(Human); O35566(Mouse); Q9QZA6(Rat)

*AREX continuously optimizes our products. Webpage content may not reflect the latest updates. For inquiries, please contact info@arexbio.com or your local distributor.

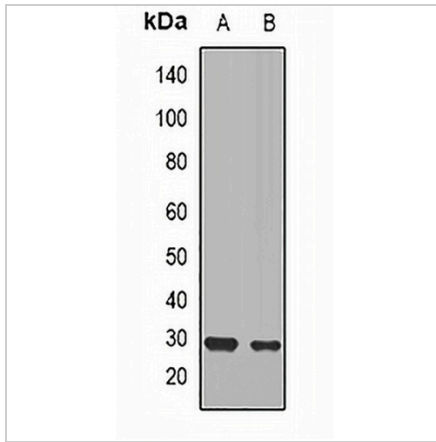
*Clone Number, Reactivity, Source/Host and Clonality can be found in the product name and Key Features section above.

DATASHEET

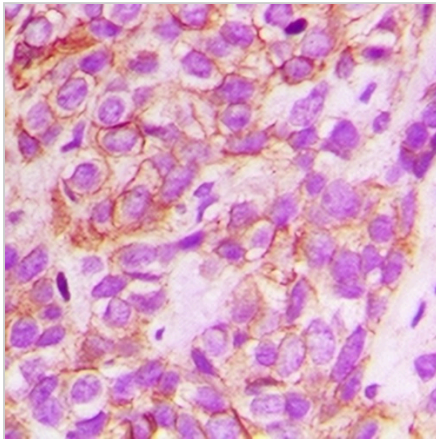
CD151 Rabbit Polyclonal Antibody

CAT. NO. APA13356

DATA



Western blot analysis of CD151 expression in mouse kidney (A), mouse brain (B) whole cell lysates. (Predicted band size: 28 kD; Observed band size: 28 kD)



Immunohistochemical analysis of CD151 staining in human breast cancer formalin fixed paraffin embedded tissue section. The section was pre-treated using heat mediated antigen retrieval with sodium citrate buffer (pH 6.0). The section was then incubated with the antibody at room temperature and detected using an HRP conjugated compact polymer system. DAB was used as the chromogen. The section was then counterstained with haematoxylin and mounted with DPX.

STORAGE

Store at 4°C short term. For long term storage, store at -20°C, avoiding freeze/thaw cycles.

NOTE

For Research Use Only. Not for diagnostic, therapeutics, prophylactic or in vivo use.