

DATASHEET

CD2AP Rabbit Polyclonal Antibody

CAT. NO. APA13360

KEY FEATURES

Target	CD2AP	Source / Host	Rabbit
Reactivity	Human, Mouse, Rat	Clonality	Polyclonal
Applications	WB	Conjugation	Unconjugated
Form / Buffer	Liquid in 0.42% Potassium phosphate, 0.87% Sodium chloride, pH 7.3, 30% glycerol, and 0.01% sodium azide.		Storage at -20°C

BACKGROUND

Seems to act as an adapter protein between membrane proteins and the actin cytoskeleton . In collaboration with CBLC, modulates the rate of RET turnover and may act as regulatory checkpoint that limits the potency of GDNF on neuronal survival. Controls CBLC function, converting it from an inhibitor to a promoter of RET degradation . May play a role in receptor clustering and cytoskeletal polarity in the junction between T-cell and antigen-presenting cell . May anchor the podocyte slit diaphragm to the actin cytoskeleton in renal glomerolus. Also required for cytokinesis . Plays a role in epithelial cell junctions formation .

APPLICATION

To ensure optimal assay performance, AREX recommends conducting reagent titration tailored to each testing system for optimal detection results.

WB	1:500 - 1:2000
----	----------------

*Results are sample-specific. Please refer to your local assay conditions and test parameters for reference.

PRODUCT OVERVIEW

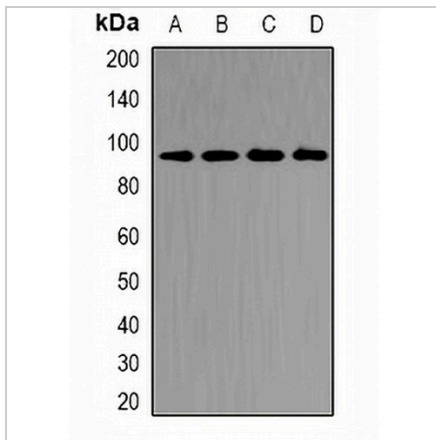
Description	Rabbit polyclonal antibody to CD2AP
Specificity	Recognizes endogenous levels of CD2AP protein.
Antibody Type	Primary antibody
Immunogen	Recombinant fusion protein of human CD2AP
Purification	The antibody was purified by immunogen affinity chromatography.
Molecular Weight	Predicted: 71 kD; Observed: 90 kD
Form/Buffer	Liquid in 0.42% Potassium phosphate, 0.87% Sodium chloride, pH 7.3, 30% glycerol, and 0.01% sodium azide.
Alternative Names	CD2-associated protein; Adapter protein CMS; Cas ligand with multiple SH3 domains
Gene Symbol	CD2AP
Entrez Gene	23607(Human); 12488(Mouse)
SwissProt	Q9Y5K6(Human); Q9JLQ0(Mouse); F1LRS8(Rat)

*AREX continuously optimizes our products. Webpage content may not reflect the latest updates. For inquiries, please contact info@arexbio.com or your local distributor.

*Clone Number, Reactivity, Source/Host and Clonality can be found in the product name and Key Features section above.

DATASHEET**CD2AP Rabbit Polyclonal Antibody**

CAT. NO. APA13360

DATA

Western blot analysis of CD2AP expression in MCF7 (A), SW480 (B), mouse kidney (C), rat kidney (D) whole cell lysates. (Predicted band size: 71 kD; Observed band size: 90 kD)

STORAGE

Store at 4°C short term. For long term storage, store at -20°C, avoiding freeze/thaw cycles.

NOTE

For Research Use Only. Not for diagnostic, therapeutics, prophylactic or in vivo use.