

**DATASHEET**

**CDK20 Rabbit Polyclonal Antibody**

CAT. NO. APA13367

**KEY FEATURES**

|               |   |               |                    |
|---------------|---|---------------|--------------------|
| Target        | CDK20   | Source / Host | Rabbit             |
| Reactivity    | Human, Mouse, Rat   | Clonality     | Polyclonal         |
| Applications  | WB, IHC   | Conjugation   | Unconjugated       |
| Form / Buffer | Liquid in 0.42% Potassium phosphate, 0.87% Sodium chloride, pH 7.3, 30% glycerol, and 0.01% sodium azide. |               | Storage<br>at-20°C |

**BACKGROUND**

Required for high-level Shh responses in the developing neural tube. Together with TBC1D32, controls the structure of the primary cilium by coordinating assembly of the ciliary membrane and axoneme, allowing GLI2 to be properly activated in response to SHH signaling. Involved in cell growth. Activates CDK2, a kinase involved in the control of the cell cycle, by phosphorylating residue 'Thr-160'.

**APPLICATION**

To ensure optimal assay performance, AREX recommends conducting reagent titration tailored to each testing system for optimal detection results.

|     |                |
|-----|----------------|
| WB  | 1:500 - 1:1000 |
| IHC | 1:50 - 1:200   |

\*Results are sample-specific. Please refer to your local assay conditions and test parameters for reference.

**PRODUCT OVERVIEW**

|                   |   |
|-------------------|---|
| Description       | Rabbit polyclonal antibody to CDK20   |
| Specificity       | Recognizes endogenous levels of CDK20 protein.  |
| Antibody Type     | Primary antibody  |
| Immunogen         | KLH-conjugated synthetic peptide of human CDK20   |
| Purification      | The antibody was purified by immunogen affinity chromatography.   |
| Molecular Weight  | Predicted: 27; Observed: 35 kD  |
| Form/Buffer       | Liquid in 0.42% Potassium phosphate, 0.87% Sodium chloride, pH 7.3, 30% glycerol, and 0.01% sodium azide.   |
| Alternative Names | CCRK; CDCH; Cyclin-dependent kinase 20; CDK-activating kinase p42; CAK-kinase p42; Cell cycle-related kinase; Cell division protein kinase 20; Cyclin-dependent protein kinase H; Cyclin-kinase-activating kinase p42 |
| Gene Symbol       | CDK20   |
| Entrez Gene       | 23552(Human); 105278(Mouse); 364666(Rat)  |
| SwissProt         | Q8IZL9(Human); Q9JHU3(Mouse); Q4KM34(Rat)   |

\*AREX continuously optimizes our products. Webpage content may not reflect the latest updates. For inquiries, please contact [info@arexbio.com](mailto:info@arexbio.com) or your local distributor.

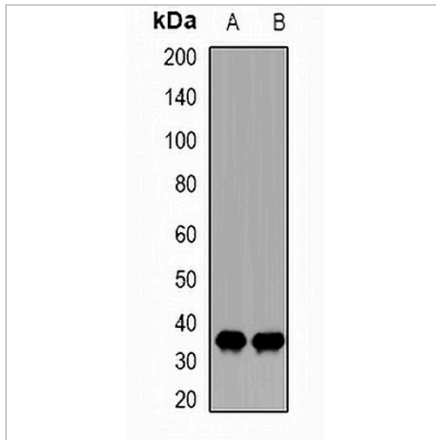
\*Clone Number, Reactivity, Source/Host and Clonality can be found in the product name and Key Features section above.

**DATASHEET**

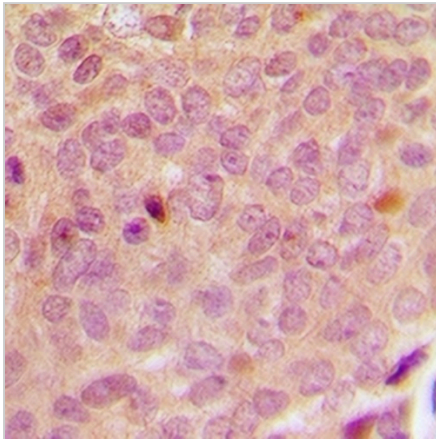
**CDK20 Rabbit Polyclonal Antibody**

CAT. NO. APA13367

**DATA**



Western blot analysis of CDK20 expression in MCF7 (A), THP1 (B) whole cell lysates. (Predicted band size: 27; 30; 36; 37; 38 kD; Observed band size: 35 kD)



Immunohistochemical analysis of CDK20 staining in human breast cancer formalin fixed paraffin embedded tissue section. The section was pre-treated using heat mediated antigen retrieval with sodium citrate buffer (pH 6.0). The section was then incubated with the antibody at room temperature and detected using an HRP conjugated compact polymer system. DAB was used as the chromogen. The section was then counterstained with haematoxylin and mounted with DPX.

**STORAGE**

Store at 4°C short term. For long term storage, store at -20°C, avoiding freeze/thaw cycles.

**NOTE**

For Research Use Only. Not for diagnostic, therapeutics, prophylactic or in vivo use.