

DATASHEET

CEL Rabbit Polyclonal Antibody

CAT. NO. APA13374

KEY FEATURES

Target	CEL	Source / Host	Rabbit
Reactivity	Human, Mouse, Rat	Clonality	Polyclonal
Applications	WB	Conjugation	Unconjugated
Form / Buffer	Liquid in 0.42% Potassium phosphate, 0.87% Sodium chloride, pH 7.3, 30% glycerol, and 0.01% sodium azide.		Storage at -20°C

BACKGROUND

Catalyzes the hydrolysis of a wide range of substrates including cholesteryl esters, phospholipids, lysophospholipids, di- and tri-acylglycerols, and fatty acid esters of hydroxy fatty acids (FAHFAs). Preferentially hydrolyzes FAHFAs with the ester bond further away from the carboxylate. Unsaturated FAHFAs are hydrolyzed more quickly than saturated FAHFAs. Has an essential role in the complete digestion of dietary lipids and their intestinal absorption, along with the absorption of fat-soluble vitamins.

APPLICATION

To ensure optimal assay performance, AREX recommends conducting reagent titration tailored to each testing system for optimal detection results.

WB	1:500 - 1:2000
----	----------------

*Results are sample-specific. Please refer to your local assay conditions and test parameters for reference.

PRODUCT OVERVIEW

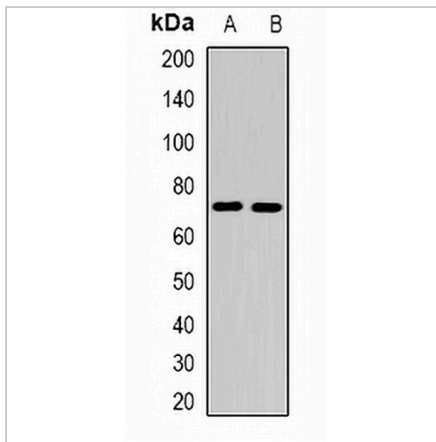
Description	Rabbit polyclonal antibody to CEL
Specificity	Recognizes endogenous levels of CEL protein.
Antibody Type	Primary antibody
Immunogen	Recombinant fusion protein of human CEL
Purification	The antibody was purified by immunogen affinity chromatography.
Molecular Weight	Predicted: 71; Observed: 71 kD
Form/Buffer	Liquid in 0.42% Potassium phosphate, 0.87% Sodium chloride, pH 7.3, 30% glycerol, and 0.01% sodium azide.
Alternative Names	BAL; Bile salt-activated lipase; BAL; Bile salt-stimulated lipase; BSSL; Bucelipase; Carboxyl ester lipase; Cholesterol esterase; Pancreatic lysophospholipase; Sterol esterase
Gene Symbol	CEL
Entrez Gene	1056(Human); 12613(Mouse)
SwissProt	P19835(Human); Q64285(Mouse); P07882(Rat)

*AREX continuously optimizes our products. Webpage content may not reflect the latest updates. For inquiries, please contact info@arexbio.com or your local distributor.

*Clone Number, Reactivity, Source/Host and Clonality can be found in the product name and Key Features section above.

DATASHEET**CEL Rabbit Polyclonal Antibody**

CAT. NO. APA13374

DATA

Western blot analysis of CEL expression in Raji (A), mouse spleen (B) whole cell lysates. (Predicted band size: 71; 79 kD; Observed band size: 71 kD)

STORAGE

Store at 4°C short term. For long term storage, store at -20°C, avoiding freeze/thaw cycles.

NOTE

For Research Use Only. Not for diagnostic, therapeutics, prophylactic or in vivo use.