

**DATASHEET**

**CENP-C Rabbit Polyclonal Antibody**

CAT. NO. APA13375

**KEY FEATURES**

Target	CENP-C	Source / Host	Rabbit
Reactivity	Human, Mouse, Rat	Clonality	Polyclonal
Applications	WB	Conjugation	Unconjugated
Form / Buffer	Liquid in 0.42% Potassium phosphate, 0.87% Sodium chloride, pH 7.3, 30% glycerol, and 0.01% sodium azide.		Storage at -20°C

**BACKGROUND**

Component of the CENPA-NAC (nucleosome-associated) complex, a complex that plays a central role in assembly of kinetochore proteins, mitotic progression and chromosome segregation. The CENPA-NAC complex recruits the CENPA-CAD (nucleosome distal) complex and may be involved in incorporation of newly synthesized CENPA into centromeres. CENPC recruits DNA methylation and DNMT3B to both centromeric and pericentromeric satellite repeats and regulates the histone code in these regions.

**APPLICATION**

To ensure optimal assay performance, AREX recommends conducting reagent titration tailored to each testing system for optimal detection results.

WB	1:500 - 1:1000
----	----------------

\*Results are sample-specific. Please refer to your local assay conditions and test parameters for reference.

**PRODUCT OVERVIEW**

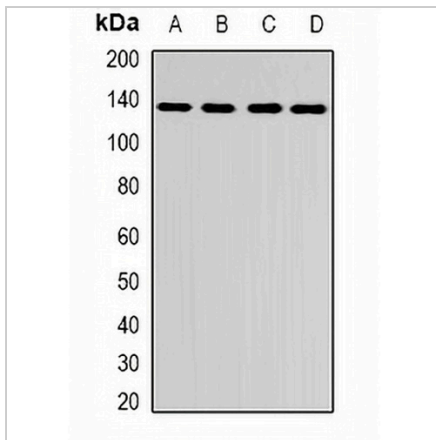
Description	Rabbit polyclonal antibody to CENP-C
Specificity	Recognizes endogenous levels of CENP-C protein.
Antibody Type	Primary antibody
Immunogen	Recombinant fusion protein of human CENP-C
Purification	The antibody was purified by immunogen affinity chromatography.
Molecular Weight	Predicted: 61; Observed: 130 kD
Form/Buffer	Liquid in 0.42% Potassium phosphate, 0.87% Sodium chloride, pH 7.3, 30% glycerol, and 0.01% sodium azide.
Alternative Names	CENPC1; ICEN7; Centromere protein C; CENP-C; Centromere autoantigen C; Centromere protein C 1; CENP-C 1; Interphase centromere complex protein 7
Gene Symbol	CENPC
Entrez Gene	1060(Human); 12617(Mouse)
SwissProt	Q03188(Human); P49452(Mouse)

\*AREX continuously optimizes our products. Webpage content may not reflect the latest updates. For inquiries, please contact [info@arexbio.com](mailto:info@arexbio.com) or your local distributor.

\*Clone Number, Reactivity, Source/Host and Clonality can be found in the product name and Key Features section above.

**DATASHEET****CENP-C Rabbit Polyclonal Antibody**

CAT. NO. APA13375

**DATA**

Western blot analysis of CENP-C expression in A431 (A), HepG2 (B), mouse brain (C), rat brain (D) whole cell lysates. (Predicted band size: 61; 106 kD; Observed band size: 130 kD)

**STORAGE**

Store at 4°C short term. For long term storage, store at -20°C, avoiding freeze/thaw cycles.

**NOTE**

For Research Use Only. Not for diagnostic, therapeutics, prophylactic or in vivo use.