

DATASHEET

CFHR1 Rabbit Polyclonal Antibody

CAT. NO. APA13376

KEY FEATURES

Target	CFHR1	Source / Host	Rabbit
Reactivity	Human	Clonality	Polyclonal
Applications	WB, IHC	Conjugation	Unconjugated
Form / Buffer	Liquid in 0.42% Potassium phosphate, 0.87% Sodium chloride, pH 7.3, 30% glycerol, and 0.01% sodium azide.		Storage at -20°C

BACKGROUND

Involved in complement regulation. The dimerized forms have avidity for tissue-bound complement fragments and efficiently compete with the physiological complement inhibitor CFH. Can associate with lipoproteins and may play a role in lipid metabolism.

APPLICATION

To ensure optimal assay performance, AREX recommends conducting reagent titration tailored to each testing system for optimal detection results.

WB	1:500 - 1:2000
IHC	1:50 - 1:200

*Results are sample-specific. Please refer to your local assay conditions and test parameters for reference.

PRODUCT OVERVIEW

Description	Rabbit polyclonal antibody to CFHR1
Specificity	Recognizes endogenous levels of CFHR1 protein.
Antibody Type	Primary antibody
Immunogen	Recombinant fusion protein of human CFHR1
Purification	The antibody was purified by immunogen affinity chromatography.
Molecular Weight	Predicted: 37 kD; Observed: 43 kD
Form/Buffer	Liquid in 0.42% Potassium phosphate, 0.87% Sodium chloride, pH 7.3, 30% glycerol, and 0.01% sodium azide.
Alternative Names	CFHL; CFHL1; CFHL1P; CFHR1P; FHR1; HFL1; HFL2; Complement factor H-related protein 1; FHR-1; H factor-like protein 1; H-factor-like 1; H36
Gene Symbol	CFHR1
Entrez Gene	3078(Human)
SwissProt	Q03591(Human)

*AREX continuously optimizes our products. Webpage content may not reflect the latest updates. For inquiries, please contact info@arexbio.com or your local distributor.

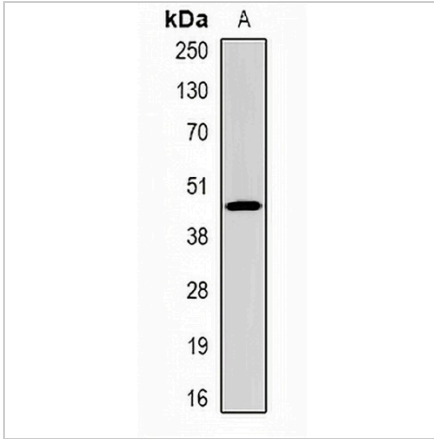
*Clone Number, Reactivity, Source/Host and Clonality can be found in the product name and Key Features section above.

DATASHEET

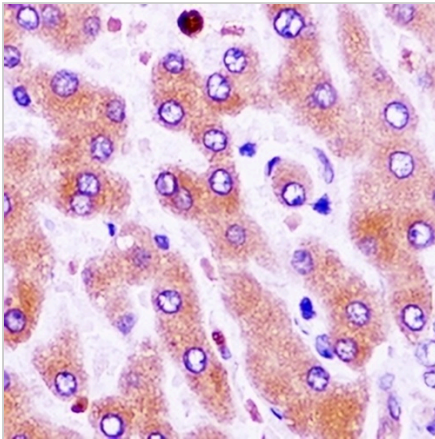
CFHR1 Rabbit Polyclonal Antibody

CAT. NO. APA13376

DATA



Western blot analysis of CFHR1 expression in mouse liver (A) whole cell lysates. (Predicted band size: 37 kD; Observed band size: 43 kD)



Immunohistochemical analysis of CFHR1 staining in human liver cancer formalin fixed paraffin embedded tissue section. The section was pre-treated using heat mediated antigen retrieval with sodium citrate buffer (pH 6.0). The section was then incubated with the antibody at room temperature and detected using an HRP conjugated compact polymer system. DAB was used as the chromogen. The section was then counterstained with haematoxylin and mounted with DPX.

STORAGE

Store at 4°C short term. For long term storage, store at -20°C, avoiding freeze/thaw cycles.

NOTE

For Research Use Only. Not for diagnostic, therapeutics, prophylactic or in vivo use.