

**DATASHEET**

**CLCN5 Rabbit Polyclonal Antibody**

CAT. NO. APA13380

**KEY FEATURES**

|               |   |               |                     |
|---------------|---|---------------|---------------------|
| Target        | CLCN5   | Source / Host | Rabbit              |
| Reactivity    | Human, Mouse, Rat   | Clonality     | Polyclonal          |
| Applications  | WB  | Conjugation   | Unconjugated        |
| Form / Buffer | Liquid in 0.42% Potassium phosphate, 0.87% Sodium chloride, pH 7.3, 30% glycerol, and 0.01% sodium azide. |               | Storage<br>at -20°C |

**BACKGROUND**

Proton-coupled chloride transporter. Functions as antiport system and exchanges chloride ions against protons . Important for normal acidification of the endosome lumen. May play an important role in renal tubular function. The CLC channel family contains both chloride channels and proton-coupled anion transporters that exchange chloride or another anion for protons. The absence of conserved gating glutamate residues is typical for family members that function as channels (Probable).

**APPLICATION**

To ensure optimal assay performance, AREX recommends conducting reagent titration tailored to each testing system for optimal detection results.

|    |                |
|----|----------------|
| WB | 1:500 - 1:1000 |
|----|----------------|

\*Results are sample-specific. Please refer to your local assay conditions and test parameters for reference.

**PRODUCT OVERVIEW**

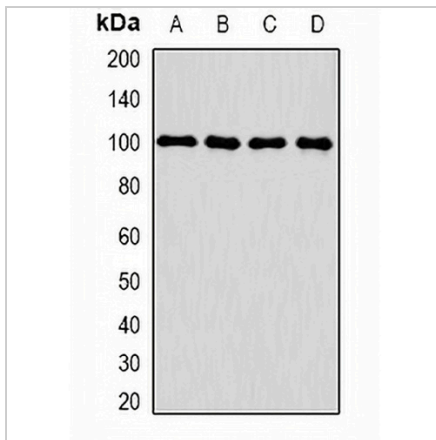
|                   |   |
|-------------------|---|
| Description       | Rabbit polyclonal antibody to CLCN5   |
| Specificity       | Recognizes endogenous levels of CLCN5 protein.  |
| Antibody Type     | Primary antibody  |
| Immunogen         | Recombinant fusion protein of human CLCN5   |
| Purification      | The antibody was purified by immunogen affinity chromatography.   |
| Molecular Weight  | Predicted: 83; Observed: 100 kD   |
| Form/Buffer       | Liquid in 0.42% Potassium phosphate, 0.87% Sodium chloride, pH 7.3, 30% glycerol, and 0.01% sodium azide. |
| Alternative Names | CLCK2; H(+)/Cl(-) exchange transporter 5; Chloride channel protein 5; ClC-5; Chloride transporter ClC-5   |
| Gene Symbol       | CLCN5   |
| Entrez Gene       | 1184(Human); 12728(Mouse); 25749(Rat)   |
| SwissProt         | P51795(Human); Q9WVD4(Mouse); P51796(Rat)   |

\*AREX continuously optimizes our products. Webpage content may not reflect the latest updates. For inquiries, please contact [info@arexbio.com](mailto:info@arexbio.com) or your local distributor.

\*Clone Number, Reactivity, Source/Host and Clonality can be found in the product name and Key Features section above.

**DATASHEET****CLCN5 Rabbit Polyclonal Antibody**

CAT. NO. APA13380

**DATA**

Western blot analysis of CLCN5 expression in HepG2 (A), THP1 (B), mouse kidney (C), mouse brain (D) whole cell lysates. (Predicted band size: 83; 90 kD; Observed band size: 100 kD)

**STORAGE**

Store at 4°C short term. For long term storage, store at -20°C, avoiding freeze/thaw cycles.

**NOTE**

For Research Use Only. Not for diagnostic, therapeutics, prophylactic or in vivo use.