

DATASHEET

CLEC12A Rabbit Polyclonal Antibody

CAT. NO. APA13381

KEY FEATURES

Target	CLEC12A	Source / Host	Rabbit
Reactivity	Human, Mouse, Rat	Clonality	Polyclonal
Applications	WB	Conjugation	Unconjugated
Form / Buffer	Liquid in 0.42% Potassium phosphate, 0.87% Sodium chloride, pH 7.3, 30% glycerol, and 0.01% sodium azide.		Storage at -20°C

BACKGROUND

Myeloid inhibitory C-type lectin receptor that acts as a negative regulator of myeloid cell activation . Myeloid cell inhibition is required to limit proinflammatory pathways and protect against excessive inflammation . Specifically recognizes and binds various structures, such as neutrophil extracellular traps (NETs) or monosodium urate crystals . Also acts as a pattern-recognition receptor for pathogen-associated molecules, such as plasmodium hemozoin or mycobacterial micolic acid . Ligand-binding induces phosphorylation of its ITIM motif, followed by recruitment of tyrosine-protein phosphatases PTPN6 and PTPN11, which counteract tyrosine-protein kinase SYK, thereby preventing myeloid cell activation .

APPLICATION

To ensure optimal assay performance, AREX recommends conducting reagent titration tailored to each testing system for optimal detection results.

WB	1:500 - 1:2000
----	----------------

*Results are sample-specific. Please refer to your local assay conditions and test parameters for reference.

PRODUCT OVERVIEW

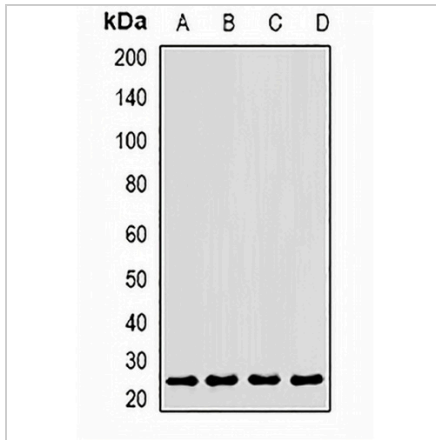
Description	Rabbit polyclonal antibody to CLEC12A
Specificity	Recognizes endogenous levels of CLEC12A protein.
Antibody Type	Primary antibody
Immunogen	Recombinant fusion protein of human CLEC12A
Purification	The antibody was purified by immunogen affinity chromatography.
Molecular Weight	Predicted: 8; Observed: 24 kD
Form/Buffer	Liquid in 0.42% Potassium phosphate, 0.87% Sodium chloride, pH 7.3, 30% glycerol, and 0.01% sodium azide.
Alternative Names	CLL1; DCAL2; MICL; C-type lectin domain family 12 member A; C-type lectin-like molecule 1; CLL-1; Dendritic cell-associated lectin 2; DCAL-2; Myeloid inhibitory C-type lectin-like receptor; MICL
Gene Symbol	CLEC12A
Entrez Gene	160364(Human); 232413(Mouse)
SwissProt	Q5QGZ9(Human); Q504P2(Mouse)

*AREX continuously optimizes our products. Webpage content may not reflect the latest updates. For inquiries, please contact info@arexbio.com or your local distributor.

*Clone Number, Reactivity, Source/Host and Clonality can be found in the product name and Key Features section above.

DATASHEET**CLEC12A Rabbit Polyclonal Antibody**

CAT. NO. APA13381

DATA

Western blot analysis of CLEC12A expression in MCF7 (A), U937 (B), mouse heart (C), rat liver (D) whole cell lysates. (Predicted band size: 8; 24; 27; 30; 32 kD; Observed band size: 24 kD)

STORAGE

Store at 4°C short term. For long term storage, store at -20°C, avoiding freeze/thaw cycles.

NOTE

For Research Use Only. Not for diagnostic, therapeutics, prophylactic or in vivo use.