

DATASHEET

Clathrin Heavy Chain Rabbit Polyclonal Antibody

CAT. NO. APA13384

KEY FEATURES

Target	Clathrin Heavy Chain	Source / Host	Rabbit
Reactivity	Human, Mouse, Rat	Clonality	Polyclonal
Applications	WB	Conjugation	Unconjugated
Form / Buffer	Liquid in 0.42% Potassium phosphate, 0.87% Sodium chloride, pH 7.3, 30% glycerol, and 0.01% sodium azide.		Storage at -20°C

BACKGROUND

Clathrin is the major protein of the polyhedral coat of coated pits and vesicles. Two different adapter protein complexes link the clathrin lattice either to the plasma membrane or to the trans-Golgi network. Acts as a component of the TACC3/ch-TOG/clathrin complex proposed to contribute to stabilization of kinetochore fibers of the mitotic spindle by acting as inter-microtubule bridge . The TACC3/ch-TOG/clathrin complex is required for the maintenance of kinetochore fiber tension . Plays a role in early autophagosome formation . Interaction with DNAJC6 mediates the recruitment of HSPA8 to the clathrin lattice and creates local destabilization of the lattice promoting uncoating .

APPLICATION

To ensure optimal assay performance, AREX recommends conducting reagent titration tailored to each testing system for optimal detection results.

WB	1:500 - 1:1000
----	----------------

*Results are sample-specific. Please refer to your local assay conditions and test parameters for reference.

PRODUCT OVERVIEW

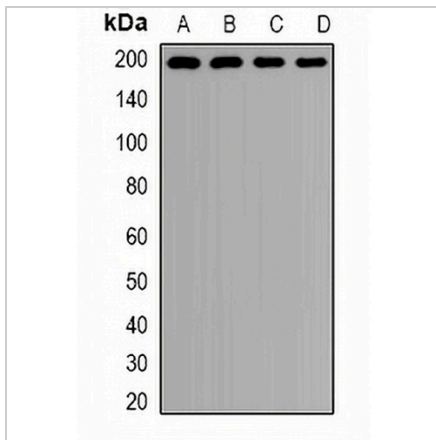
Description	Rabbit polyclonal antibody to Clathrin Heavy Chain
Specificity	Recognizes endogenous levels of Clathrin Heavy Chain protein.
Antibody Type	Primary antibody
Immunogen	KLH-conjugated synthetic peptide of human Clathrin Heavy Chain
Purification	The antibody was purified by immunogen affinity chromatography.
Molecular Weight	Predicted: 187; Observed: 191 kD
Form/Buffer	Liquid in 0.42% Potassium phosphate, 0.87% Sodium chloride, pH 7.3, 30% glycerol, and 0.01% sodium azide.
Alternative Names	CLH17; CLTCL2; KIAA0034; Clathrin heavy chain 1; Clathrin heavy chain on chromosome 17; CLH-17
Gene Symbol	CLTC
Entrez Gene	1213(Human); 67300(Mouse); 54241(Rat)
SwissProt	Q00610(Human); Q68FD5(Mouse); P11442(Rat)

*AREX continuously optimizes our products. Webpage content may not reflect the latest updates. For inquiries, please contact info@arexbio.com or your local distributor.

*Clone Number, Reactivity, Source/Host and Clonality can be found in the product name and Key Features section above.

DATASHEET**Clathrin Heavy Chain Rabbit Polyclonal Antibody**

CAT. NO. APA13384

DATA

Western blot analysis of Clathrin Heavy Chain expression in Hela (A), MCF7 (B), mouse lung (C), rat brain (D) whole cell lysates. (Predicted band size: 187; 191 kD; Observed band size: 191 kD)

STORAGE

Store at 4°C short term. For long term storage, store at -20°C, avoiding freeze/thaw cycles.

NOTE

For Research Use Only. Not for diagnostic, therapeutics, prophylactic or in vivo use.