

**DATASHEET**

**CNDP1 Rabbit Polyclonal Antibody**

CAT. NO. APA13386

**KEY FEATURES**

Target	CNDP1	Source / Host	Rabbit
Reactivity	Human, Mouse, Rat	Clonality	Polyclonal
Applications	WB	Conjugation	Unconjugated
Form / Buffer	Liquid in 0.42% Potassium phosphate, 0.87% Sodium chloride, pH 7.3, 30% glycerol, and 0.01% sodium azide.		Storage at -20°C

**BACKGROUND**

Catalyzes the peptide bond hydrolysis in Xaa-His dipeptides, displaying the highest activity toward carnosine (beta-alanyl-L-histidine) and anserine (beta-alanyl-3-methyl-histidine).

**APPLICATION**

To ensure optimal assay performance, AREX recommends conducting reagent titration tailored to each testing system for optimal detection results.

WB	1:500 - 1:2000
----	----------------

\*Results are sample-specific. Please refer to your local assay conditions and test parameters for reference.

**PRODUCT OVERVIEW**

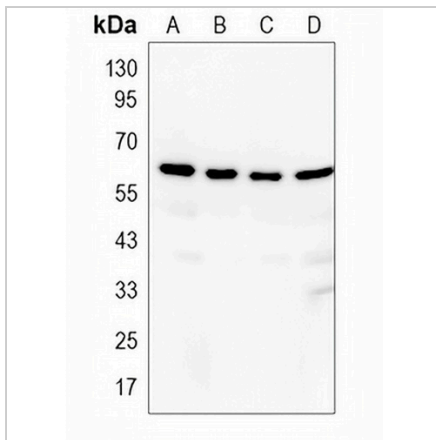
Description	Rabbit polyclonal antibody to CNDP1
Specificity	Recognizes endogenous levels of CNDP1 protein.
Antibody Type	Primary antibody
Immunogen	Recombinant fusion protein of human CNDP1
Purification	The antibody was purified by immunogen affinity chromatography.
Molecular Weight	Predicted: 56 kD; Observed: 57 kD
Form/Buffer	Liquid in 0.42% Potassium phosphate, 0.87% Sodium chloride, pH 7.3, 30% glycerol, and 0.01% sodium azide.
Alternative Names	CN1; CPGL2; Beta-Ala-His dipeptidase; CNDP dipeptidase 1; Carnosine dipeptidase 1; Glutamate carboxypeptidase-like protein 2; Serum carnosinase
Gene Symbol	CNDP1
Entrez Gene	84735(Human); 338403(Mouse); 307212(Rat)
SwissProt	Q96KN2(Human); Q8BUG2(Mouse); Q66HG3(Rat)

\*AREX continuously optimizes our products. Webpage content may not reflect the latest updates. For inquiries, please contact [info@arexbio.com](mailto:info@arexbio.com) or your local distributor.

\*Clone Number, Reactivity, Source/Host and Clonality can be found in the product name and Key Features section above.

**DATASHEET****CNDP1 Rabbit Polyclonal Antibody**

CAT. NO. APA13386

**DATA**

Western blot analysis of CNDP1 expression in A431 (A), HepG2 (B), mouse kidney (C), rat brain (D) whole cell lysates. (Predicted band size: 56 kD; Observed band size: 57 kD)

**STORAGE**

Store at 4°C short term. For long term storage, store at -20°C, avoiding freeze/thaw cycles.

**NOTE**

For Research Use Only. Not for diagnostic, therapeutics, prophylactic or in vivo use.